

# MON/FAYETTE EXPRESSWAY

## Construction Activity Weekly Updates



Planned Construction Activities for the Week of May 11, 2026

## SECTION 53A2 • WEST MIFFLIN, ALLEGHENY COUNTY

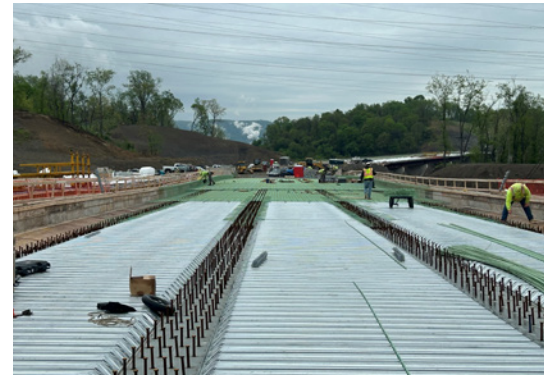
Contractor: Trumbull Corporation

### 1. Work Shift

- The standard work shift is 6:00 AM to 5:00 PM, Monday to Thursday. Friday and Saturday shifts will be used as needed. Weather will limit work activities.

### 2. Traffic

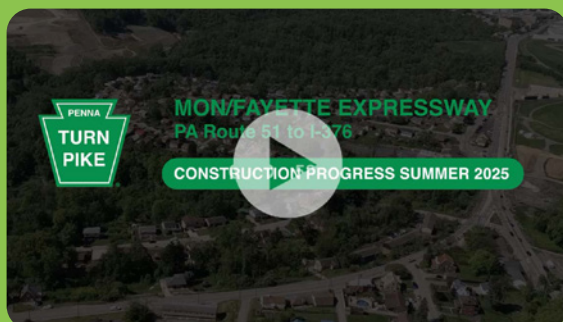
- **New England Road** – **New England Road is open.** May be daylight lane closures with flaggers and alternating traffic.
- **Lower Camp Hollow** – **Lower Camp Hollow is open.** May be daylight lane closures with flaggers and alternating traffic. Reconstruction to occur later this summer.
- **Upper Camp Hollow** – Northbound and southbound traffic are in the new roadway alignment. Access to Lebanon School Road is open. Access to Lebanon Manor is via Beverly Drive.



Bridge deck construction - bridge over Camp Hollow Road.

### 3. Roadway and Bridge Work

- **Upper Camp Hollow new alignment** – Roadway work is completed. New light added at Beverly Road Intersection.
- Lebanon Church Road/Camp Hollow intersection work will be during the 2026 season. Advance utility work in area continues. Utility relocation underway now.
- Old Camp Hollow roadway near Lebanon Manor open for local traffic. Final paving will be in 2026.
- New England Road and Lower Camp Hollow roadway under bridges will be rebuilt in 2026
- Permeable base placement on top of subbase for new roadway. Preparing for concrete paving
- **Bridge 406/407 over New England Road** – MF-406 deck rebar has completed. MF-407 deck placements are completing.



Throughout these weekly updates, you have seen construction progress along the Pennsylvania Turnpike Commission's Mon/Fayette Expressway in Allegheny County. We would now like you to come along for an exclusive ride as we show you an aerial progress report of the first two construction sections being built in West Mifflin and Jefferson Boroughs.

[WATCH THE VIDEO](#)

# MON/FAYETTE EXPRESSWAY

## Construction Activity Weekly Updates



Planned Construction Activities for the Week of May 11, 2026

- **Bridge 408/409 over Lower Camp Hollow** – MF-408 Deck placements depending on weather and curing. MF-409 Deck rebar placement.
- **Bridge 410 – New Upper Camp Hollow (SR 2043) over 43** – Bridge is complete and in use. Slope protection under abutments completed.
- **Soundwall NSA-36** – along 2043-43S ramp – erection completed. Preparing for staining both sides.

#### 4. Noise/Dust/Runoff Control

- Erosion control measures are installed and will be modified as construction advances. The erosion controls will be maintained as necessary.
- Topsoil is being placed, matted and seeded as areas are completed.
- Diversion ditches have been constructed to take runoff water to sediment basins.
- Sediment basins hold water for settlement and slow dispersion.
- A street sweeper is on-site and will be used clean local roadways when needed.
- Water trucks are on-site and will be utilized to control dust when needed.

#### 5. Trespassing on Construction Site

- The construction being performed in this area is a Limited Access Right-of-Way owned by the Pennsylvania Turnpike Commission. The construction areas are posted with No Trespassing/Private Property signs. **No pedestrians, ATVs or motorcycles should be entering the area.**
- Violators may be prosecuted under Section 3503(b)(1)(ii) which forbids criminal trespass.

Learn more about the Mon/Fayette Expressway by visiting the project website.