

MON/FAYETTE EXPRESSWAY

Construction Activity Weekly Updates



Planned Construction Activities for the Week of January 26, 2026

SECTION 53A2 • WEST MIFFLIN, ALLEGHENY COUNTY

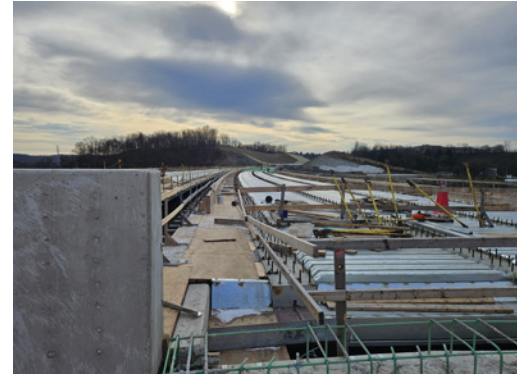
Contractor: Trumbull Corporation

1. Work Shift

- The standard work shift is 7:00 AM to 5:00 PM, Monday to Thursday. Friday and Saturday shifts will be used as needed. Weather will affect work activities.

2. Traffic

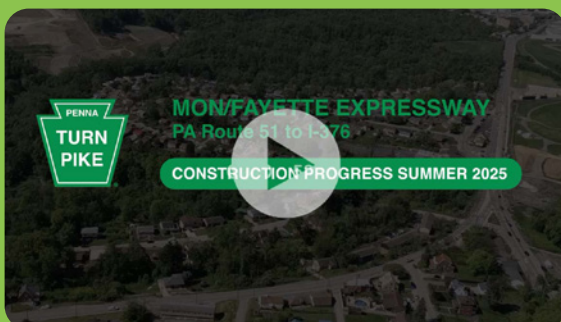
- **New England Road** – **New England Road is open.** May be daylight lane closures with flaggers and alternating traffic.
- **Lower Camp Hollow** – **Lower Camp Hollow is open.** May be daylight lane closures with flaggers and alternating traffic.
- **Upper Camp Hollow** – Northbound and southbound traffic are in the new roadway alignment. Access to Lebanon Manor and Beverly Drive is now open via new Beverly Drive connection ahead of the north roundabout. **This entrance is for Local Residential Traffic Only. Trucks are prohibited except for local deliveries.**



Bridges over New England Road - deck construction.

3. Roadway and Bridge Work

- **Upper Camp Hollow new alignment** – Main roadway work is completed. Excavating for new roadway and hauling under Camp Hollow Bridge. Mass excavation is almost complete.
- Lebanon Church Road intersection work will be during the 2026 season.
- Old Camp Hollow roadway near Lebanon Manor open for local traffic. Final paving will be in 2026.
- **Very Limited blasting remains in the area of the Old Camp Hollow Road near roundabouts when rock is encountered.** For all blasts, 5 minutes prior to blasting the contractor will give 3 horn alerts of 15 seconds each. 1 minute prior to blasting- 3 horn alerts of 10 seconds will be sounded. 30 seconds prior to blasting, a series of short horn alerts will be sounded up to the time of detonation. After the blast, the area will be checked, and a horn will be sounded for 15 seconds to indicate that “all is clear”.



Throughout these weekly updates, you have seen construction progress along the Pennsylvania Turnpike Commission's Mon/Fayette Expressway in Allegheny County. We would now like you to come along for an exclusive ride as we show you an aerial progress report of the first two construction sections being built in West Mifflin and Jefferson Boroughs.

WATCH THE VIDEO

MON/FAYETTE EXPRESSWAY

Construction Activity Weekly Updates



Planned Construction Activities for the Week of January 26, 2026

- Bulk excavation and embankment work and drainage pipe installations are underway with dozers, excavators and off road trucks. Drilling and blasting in the area of old Camp Hollow Road/ Lebanon Manor.
- **Bridge 406/407 over New England Road** – Bridge deck rebar placement occurring on MF-407. Stay in place forms and overhangs being installed on MF-406.
- **Bridge 408/409 over Lower Camp Hollow** – Steel girder final tightening. Stay in place forms and overhangs starting.
- **Bridge 410 – New Upper Camp Hollow (SR 2043) over 43** – Bridge is complete and in use.
- **Soundwall NSA-36** – along 2043-43S Ramp – Precast panel delivery and erection between posts. Staining will occur later.

4. Noise/Dust/Runoff Control

- Erosion control measures are installed and will be modified as construction advances. The erosion controls will be maintained as necessary.
- Topsoil is being placed, matted and seeded as areas are completed.
- Diversion ditches have been constructed to take runoff water to sediment basins.
- Sediment basins hold water for settlement and slow dispersion.
- A street sweeper is on-site and will be used clean local roadways when needed.
- Water trucks are on-site and will be utilized to control dust when needed.

5. Trespassing on Construction Site

- The construction being performed in this area is a Limited Access Right-of-Way owned by the Pennsylvania Turnpike Commission. The construction areas are posted with No Trespassing/ Private Property signs. **No pedestrians, ATVs or motorcycles should be entering the area.**
- Violators may be prosecuted under Section 3503(b)(1)(ii) which forbids criminal trespass.

Learn more about the Mon/Fayette Expressway by visiting the project website.