

MON/FAYETTE EXPRESSWAY

Construction Activity Weekly Updates



Planned Construction Activities for the Week of February 10, 2025

SECTION 53A2 • WEST MIFFLIN, ALLEGHENY COUNTY

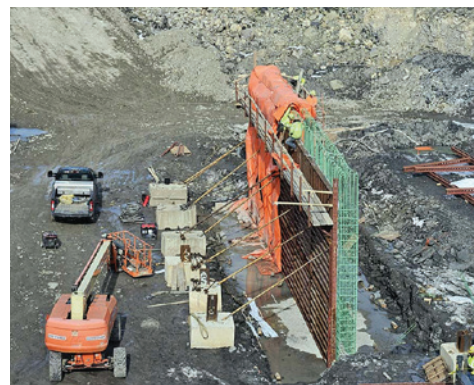
Contractor: Trumbull Corporation

1. Work Shift

- The standard work shift is 7:00 AM to 5:00 PM, Monday to Thursday. Friday and Saturday shifts will be used as needed.

2. Traffic

- **New England Road** – New England Road is open but may have lane closures with flagging daily. Construction entrances on both sides of road will be utilized.
- **Upper Camp Hollow** – Construction traffic crossing will continue at Village Lane and old Maxim Yard. Heavy construction traffic and deliveries daily at old Maxim Yard.
- **Lower Camp Hollow** – Opened to thru traffic. Construction traffic will continue crossing utilizing flaggers.



Pier construction for
Camp Hollow Road bridge.

3. Roadway and Bridge Work

- Earthwork on both sides of lower Camp Hollow at bridge crossing for pier and slope construction.
- Blasting north of Camp Hollow Road has completed. **Future blasting will start soon to the south between Camp Hollow and New England Roads.** For all blasts, 5 minutes prior to blasting the contractor will give 3 horn alerts of 15 seconds each. 1 minute prior to blasting- 3 horn alerts of 10 seconds will be sounded. 30 seconds prior to blasting, a series of short horn alerts will be sounded up to the time of detonation. After the blast, the area will be checked, and a horn will be sounded for 15 seconds to indicate that "all is clear". Additional air horns have been added to help notifications.
- Bulk excavation work and drainage pipe installations are underway with dozers, excavators and off road trucks.
- **Bridge 406/407 over New England Road** – Pier stems and caps are being placed.
- **Bridge 408/409 over lower Camp Hollow** – Excavation for the new bridge foundations is ongoing. Work on the drilled shaft caisson pier foundations continue.
- **Bridge 410 – New Upper Camp Hollow (SR 2043) over 43** – Abutment and pier footing are in cure.
- **Soundwall NSA-36** – along 2043-43S ramp – work has not begun.

4. Noise/Dust/Runoff Control

- Erosion control measures are installed and will be modified as construction advances. The erosion controls will be maintained as necessary.
- Diversion ditches being constructed to take runoff water to sediment basins.
- A street sweeper is on-site and will be used clean local roadways when needed.
- Water trucks are on-site and will be utilized to control dust when needed.

Learn more about the Mon/Fayette Expressway by visiting the project website.