

MON/FAYETTE EXPRESSWAY

Construction Activity Weekly Updates



Planned Construction Activities for the Week of August 18, 2025

SECTION 53A2 • WEST MIFFLIN, ALLEGHENY COUNTY

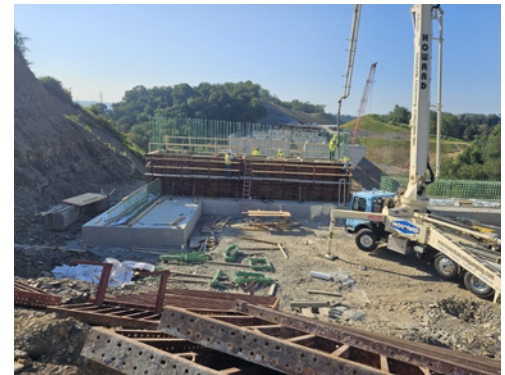
Contractor: Trumbull Corporation

1. Work Shift

- The standard work shift is 7:00 AM to 5:00 PM, Monday to Thursday. Friday and Saturday shifts will be used as needed.

2. Traffic

- **New England Road** – **New England Road is closed for crane placement and steel erection for approximately two months. Detour is SR 837 to SR 885.**
- **Lower Camp Hollow** – Opened to thru traffic to New England Road. Construction traffic will continue crossing utilizing flaggers while bridge construction is underway. This section of Lower Camp Hollow Road will be closed in the future to continue the rock slope work around piers. Closure will not be while New England Road is closed.
- **Upper Camp Hollow** – **Northbound and southbound traffic are in the new roadway alignment. Access to Lebanon School Road is open. Lebanon Manor and Beverly Drive access is via new Beverly Drive connection ahead of north roundabout.**



Concrete placement for bridge abutment - bridge over New England Road.

3. Roadway and Bridge Work

- Earthwork and pier access on both sides of lower Camp Hollow at bridge crossing for pier and slope construction.
- **Upper Camp Hollow new alignment** – Work on sides of new roadway and driveway connections.
- Blasting north of Camp Hollow Road has completed. **Blasting will occur south of Maxim Yard between Camp Hollow and New England Roads and north of Camp Hollow Road.** For all blasts, 5 minutes prior to blasting the contractor will give 3 horn alerts of 15 seconds each. 1 minute prior to blasting- 3 horn alerts of 10 seconds will be sounded. 30 seconds prior to blasting, a series of short horn alerts will be sounded up to the time of detonation. After the blast, the area will be checked, and a horn will be sounded for 15 seconds to indicate that "all is clear".
- Bulk excavation work and drainage pipe installations are underway with dozers, excavators and off road trucks. Drilling for future blasting areas.
- **Bridge 406/407 over New England Road** – Steel girder erection continues from south to north. Abutment 2 concrete placements.
- **Bridge 408/409 over Lower Camp Hollow** – Concrete pier stems being placed. Abutment 1 settlement quarantine end. Driven H-Piles to follow. Abutment 2 concrete placements.
- **Bridge 410 – New Upper Camp Hollow (SR 2043) over 43** – Bridge is complete. Final form removal. Staining of parapets and pier stem.

MON/FAYETTE EXPRESSWAY

Construction Activity Weekly Updates



Planned Construction Activities for the Week of August 18, 2025

- **Soundwall NSA-36** – along 2043-43S Ramp – Fabricating posts and panels. Embankment along 2043-43S Ramp needs completed.

4. Noise/Dust/Runoff Control

- Erosion control measures are installed and will be modified as construction advances. The erosion controls will be maintained as necessary.
- Diversion ditches have been constructed to take runoff water to sediment basins.
- Sediment basins hold water for settlement and slow dispersion.
- A street sweeper is on-site and will be used clean local roadways when needed.
- Water trucks are on-site and will be utilized to control dust when needed.



Steel girder installation for bridges over New England Road.

5. Trespassing on Construction Site

- The construction being performed in this area is a Limited Access Right-of-Way owned by the Pennsylvania Turnpike Commission. The construction areas are posted with No Trespassing/Private Property signs. **No pedestrians, ATVs or motorcycles should be entering the area.**
- Violators may be prosecuted under Section 3503(b)(1)(ii) which forbids criminal trespass.

Learn more about the Mon/Fayette Expressway by visiting the project website.