

# MON/FAYETTE EXPRESSWAY

## Construction Activity Weekly Updates



Planned Construction Activities for the Week of June 26, 2023

## SECTION 53A1 • JEFFERSON HILLS BOROUGH, ALLEGHENY COUNTY

Contractor: Trumbull Corp

### 1. Work Shift

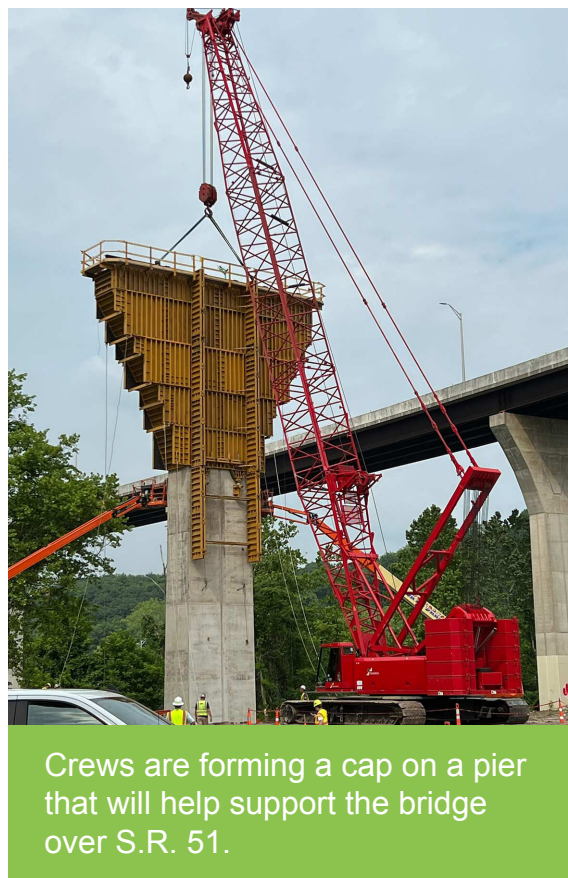
- The contractor is working 10-hour day shifts. Their standard work shift is 6:00AM to 4:00PM, Monday to Thursday. Friday and Saturday shifts will be utilized as needed.

### 2. Traffic

- An Allegheny County construction project has Coal Valley Road closed and detoured.
- Periodic single lane closure flagging will occur for mine grouting and temporary runaround construction along SR 885 Clairton Road.
- Traffic shifts have been implemented on PTC 43 Northbound and Southbound at the Jefferson Blvd. Interchange.
- Periodic single lane closures may be utilized on SR 51 Clairton Blvd for deliveries.
- Brickyard Road will have traffic restrictions during working hours.

### 3. Earthwork

- Sediment basins are being constructed for runoff control. Runoff to be stored and slowly released.
- SR 885 temporary run around is being graded and prepared for paving.
- The overexcavation and geotechnical treatments for the future highway embankments will continue.
- Pre-blast survey questionnaires have been distributed to property owners within 1,000' of the blasting limits.



Crews are forming a cap on a pier that will help support the bridge over S.R. 51.

# MON/FAYETTE EXPRESSWAY

## Construction Activity Weekly Updates



Planned Construction Activities for the Week of June 26, 2023

#### 4. Roadway and Bridge Work

- Foundation micropile drilling and installation continues for the bridge over Jefferson Blvd and SR 51 bridge MF-400/401 abutments.
- Foundation 5.5' diameter drilled shafts are being drilled for the bridges over SR 51.
- Placing grout in abandoned mine at the new bridge location along SR 885.
- Concrete placements will continue for the pier footings, columns and caps for bridges that go over SR 51/Peters Creek.

#### 5. Noise/Dust/Runoff Control

- Erosion control measures are being installed as construction advances and will be maintained as needed.
- Rock construction entrances are installed throughout the project for contractor access at various locations. The temporary access points will be maintained as needed.
- A street sweeper is on-site and will be used clean local roadways when needed.
- Water trucks are on-site and will be utilized to control dust when needed.

**SECTION 53A1 – ESTIMATED COMPLETION DATE: Late 2026**

Learn more about the Mon/Fayette Expressway by visiting the project website.