

# MON/FAYETTE EXPRESSWAY

## Construction Activity Weekly Updates



Planned Construction Activities for the Week of December 2, 2024

## SECTION 53A1 • JEFFERSON HILLS BOROUGH, ALLEGHENY COUNTY

Contractor: Trumbull Corporation

### 1. Work Shift

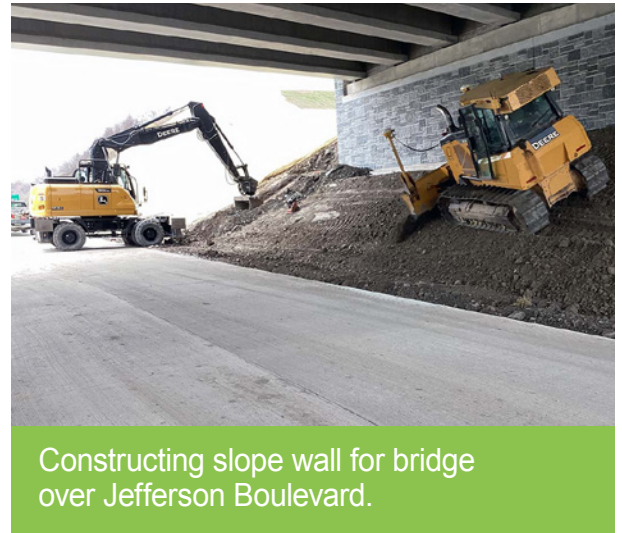
- The standard work shift is 7:00 AM to 5:30 PM, Monday to Thursday. Friday and Saturday shifts will be used as needed. Limited work will occur Monday December 2nd.

### 2. Traffic

- **Coal Valley Road** is **closed** for steel erection and a detour is posted. The closure is anticipated to last several months.
- **SR 885 Clairton Road** - There will be construction traffic and deliveries in this area.
- **PTC 43/Jefferson Boulevard** - PTC 43 southbound drivers will be using the southbound ramp. Northbound drivers will cross over to the southbound side to Jefferson Boulevard. Please monitor speed and stay in your lane through the construction area.
- **Payne Hill Road** - The intersection with Jefferson Blvd is open to public traffic.
- **Jefferson Boulevard/SR 51** - A new traffic pattern is implemented. Shifts will occur for phased reconstruction of Jefferson Boulevard at SR 51 intersection. **Follow traffic signs, arrows and stop signs and obey speed limits.**
- **Brickyard Road** will have traffic restrictions during working hours. Access and traffic will be limited.

### 3. Earthwork

- New highway drainage work continues.
- Final grading and topsoil placement continues.



Constructing slope wall for bridge over Jefferson Boulevard.

# MON/FAYETTE EXPRESSWAY

## Construction Activity Weekly Updates



Planned Construction Activities for the Week of December 2, 2024

#### 4. Roadway and Bridge Work

- Bridge 400/401 over Brickyard Rd/SR 51/Peters Creek - Stay in place deck forms, shear studs and rebar being placed. Future concrete bridge deck placements are postponed until Spring 2025.
- Bridge 402 over Jefferson Boulevard - Work will occur under bridge for the articulated cellular block slope wall.
- Bridge 403 - SR 885 over 43 - Roadway and bridge open to traffic. Work continues under bridge on articulated slopes and curbs.
- Bridge 404/405 over Coal Valley - Coal Valley Road closed for bridge steel girder erection. Span 1 has been completed. The cranes will move to Span 2.
- Jefferson Boulevard - Traffic shifts occurring to complete roadway pavement. The Payne Hill Road entrance is open to public traffic. Median section curbs and barrier being placed.
- 43 Southbound Ramp and Mainline - All traffic crossed over to southbound side. Northbound concrete paving is ongoing.

#### 5. Noise/Dust/Runoff Control

- Erosion control measures are installed and will be modified as construction advances. The erosion controls will be maintained as necessary.
- Diversion ditches have been constructed to take runoff water to sediment basins.
- A street sweeper is on-site and will be used clean local roadways when needed.
- Water trucks are on-site and will be utilized to control dust when needed.

**SECTION 53A1 – ESTIMATED COMPLETION DATE: Late 2026**

Learn more about the Mon/Fayette Expressway by visiting the project website.