



Welcome to the Public Officials Kick-off Meeting

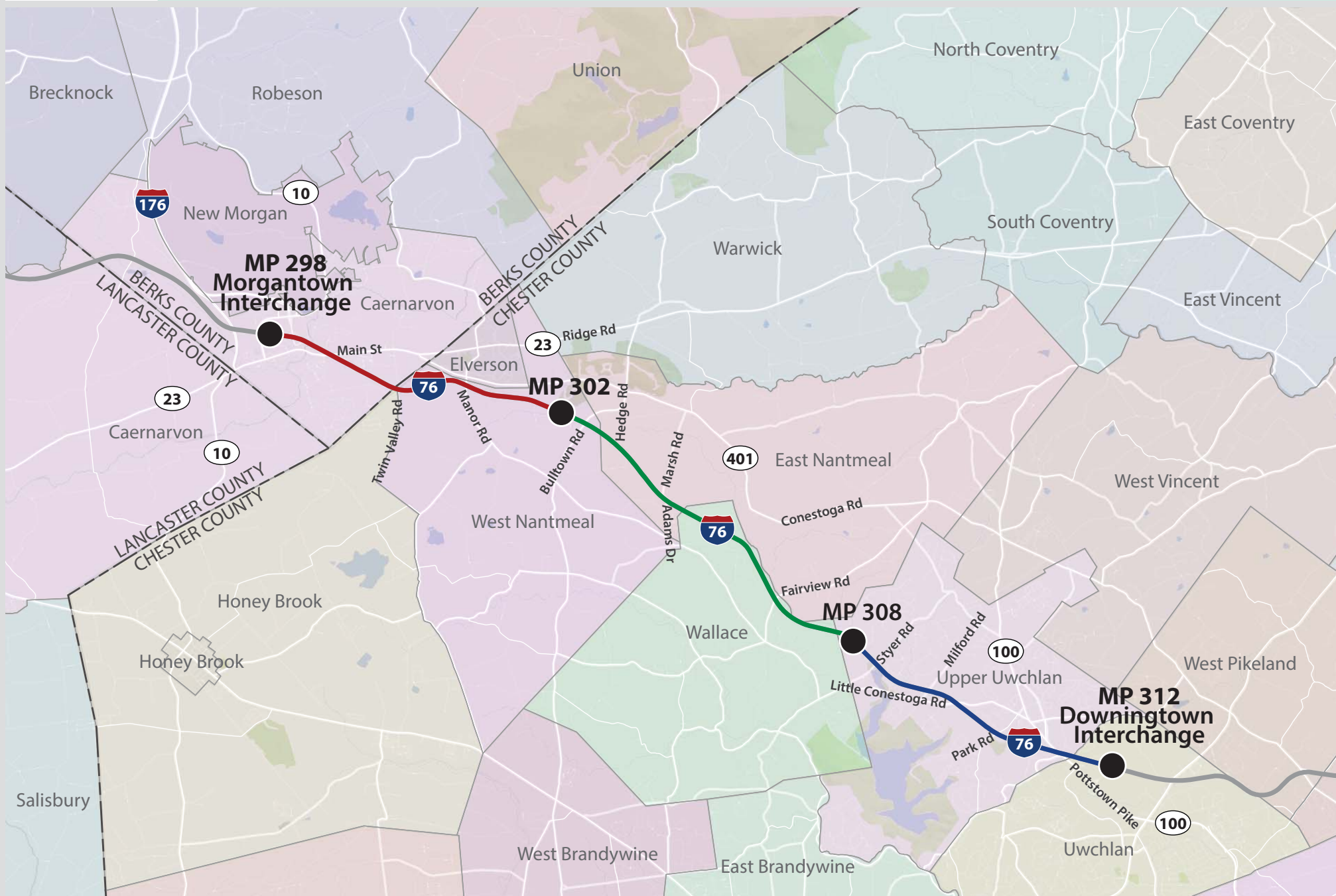
Agenda

- I. Welcome and Introductions**
- II. Project Overview**
- III. Side Road Coordination**
- IV. Stormwater Management**
- V. Project Schedule**
- VI. Public Involvement**
- VII. Open Discussion**



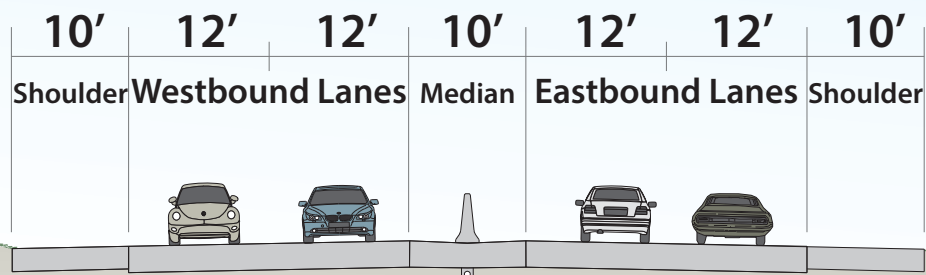
Project Location

MP 302-308

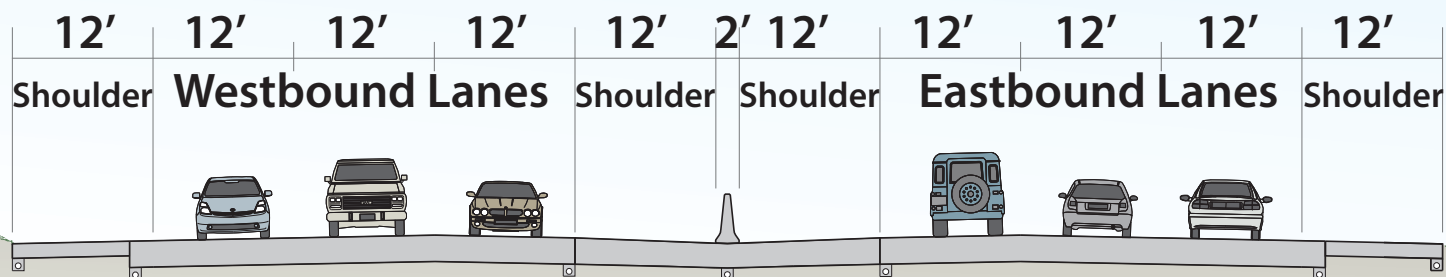


Typical Section

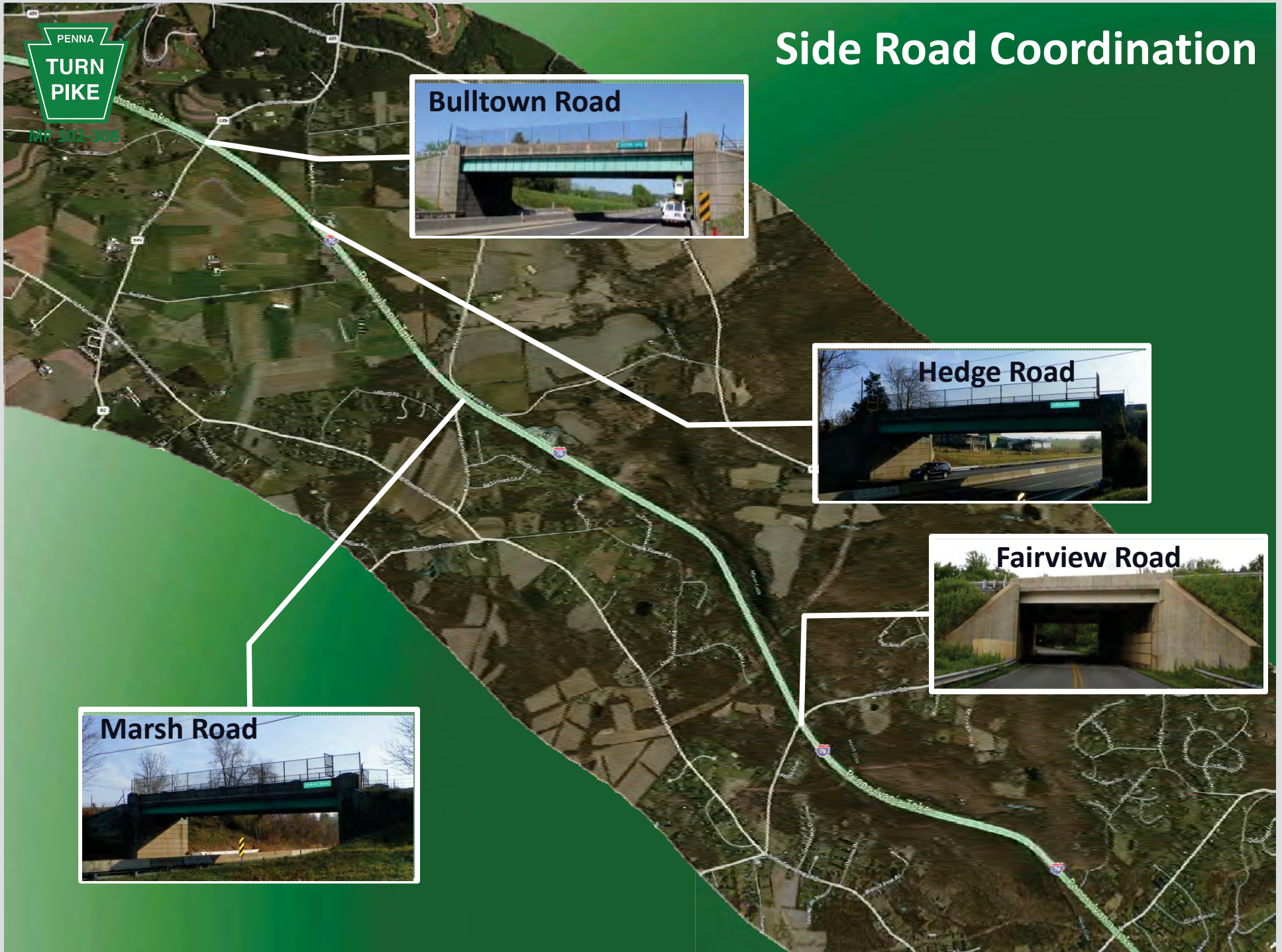
Existing Typical Section



Proposed Typical Section



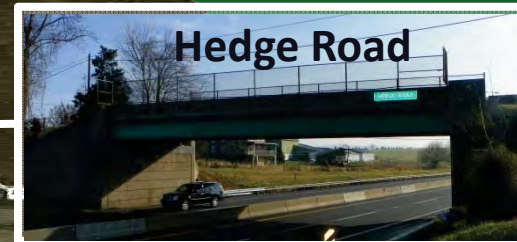
Side Road Coordination



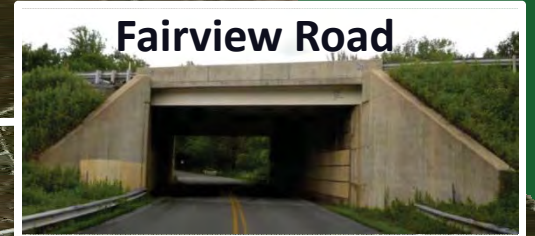
Bulltown Road



Hedge Road



Fairview Road

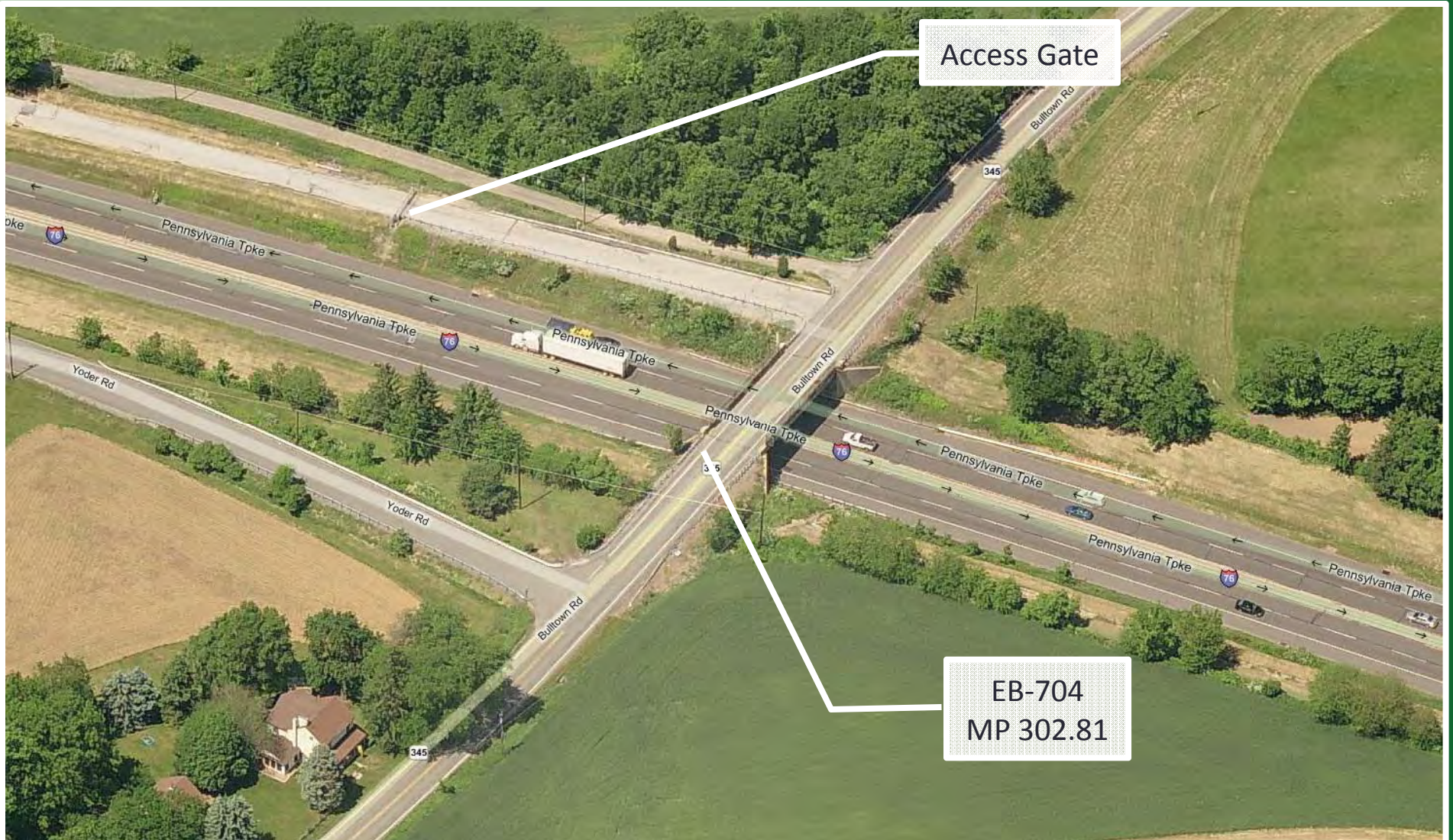


Marsh Road





Bulltown Road over Turnpike Bridge No. EB-704, MP 302.81

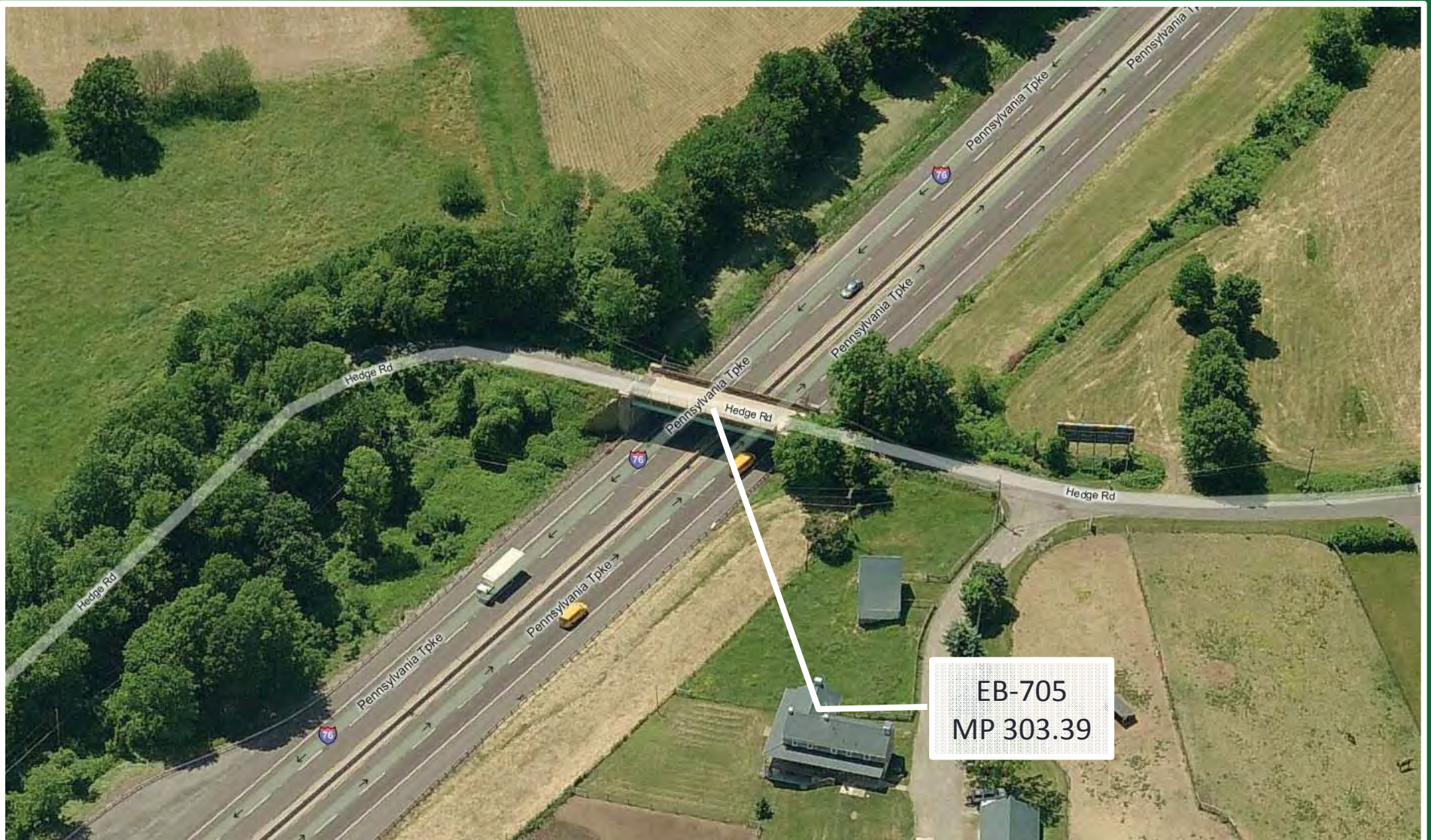


Bulltown Road over Turnpike Bridge No. EB-704, MP 302.81

Deck Plate Girder
Span – 80 feet



Hedge Road over Turnpike Bridge No. EB-705, MP 303.39



EB-705
MP 303.39

Hedge Road over Turnpike Bridge No. EB-705, MP 303.39



Deck Plate Girder
Span – 84 feet

Marsh Road over Turnpike Bridge No. EB-707, MP 304.44



Marsh Road over Turnpike Bridge No. EB-707, MP 304.44



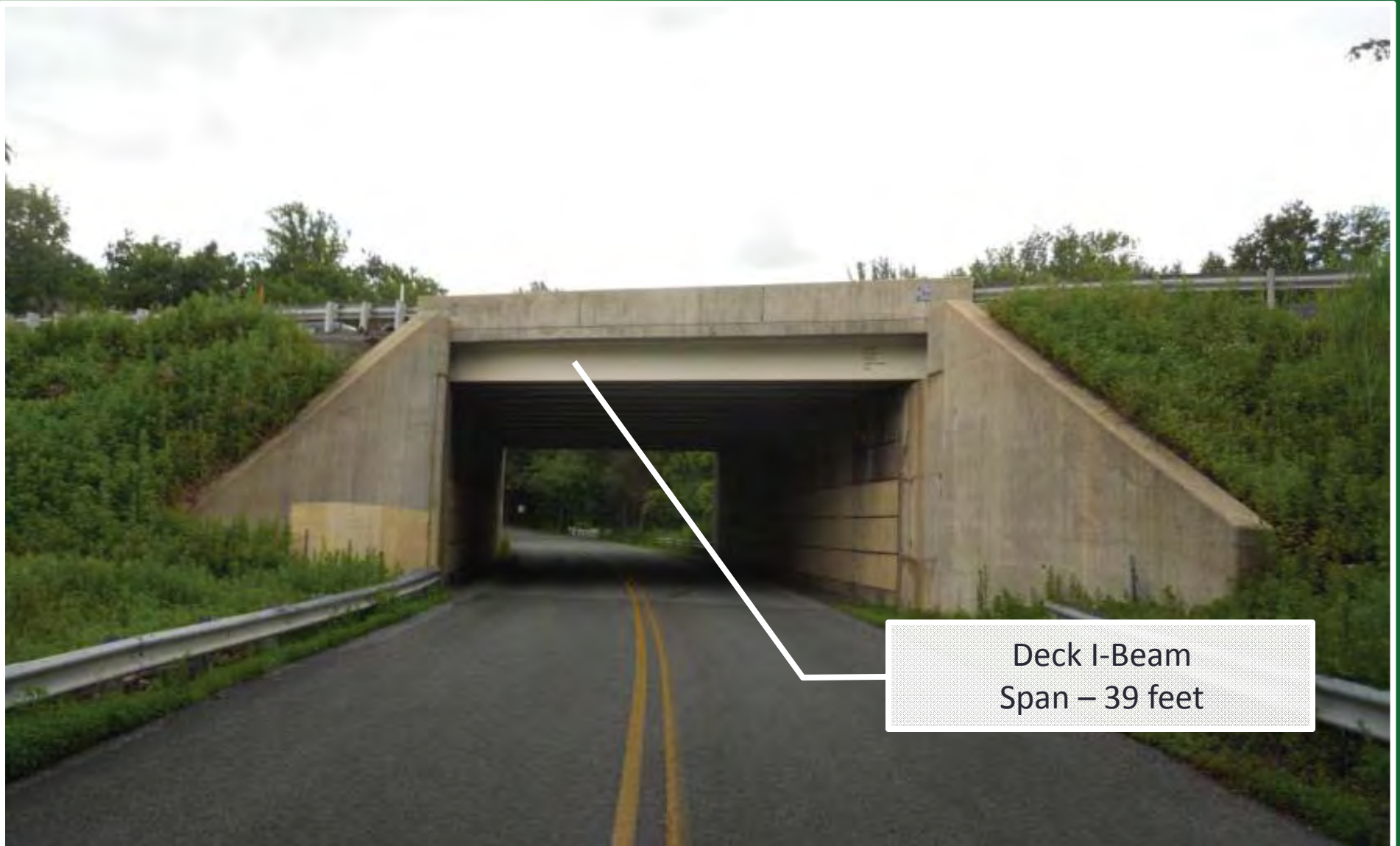
Deck I-Beam
Span – 78 feet

Turnpike over Fairview Road Bridge No. EB-708, MP 306.59





Turnpike over Fairview Road Bridge No. EB-708, MP 306.59



Deck I-Beam
Span – 39 feet

Stormwater Management

MP 302-308

- **Approved Act 167 Plans**
 - ≡ French Creek (EV)
 - ≡ Marsh Creek (HQ)
- **Township Ordinances**
 - ≡ West Nantmeal Township
 - ≡ East Nantmeal Township
 - ≡ Wallace Township
 - ≡ Upper Uwchlan Township

Project Schedule

MP 302-308

- **Preliminary Design (Approximately 2 years)**
 - ≡ Field Surveys
 - ≡ Traffic Data Collection
 - ≡ Environmental Studies
 - ≡ Geotechnical Studies
 - ≡ Utilities Locating
 - ≡ Roadway and Bridge Design
 - ≡ Drainage and Stormwater Management Design
- **Public Meeting (Anticipated Fall 2015)**
- **Advanced Overhead Bridge Replacements**
- **Mainline Turnpike Reconstruction**
- **Right of Way Acquisition Process**



Public Involvement

MP 302-308

- **Notice of Intent to Enter Letters**
 - ≡ Mailed to residents on August 20, 2013
- **Public Meeting**
 - ≡ End of Preliminary Design (Fall 2015)
 - ≡ Towards the End of Final Design
- **Project Website**
 - ≡ <http://www.paturnpike.com/ConstructionProjects/mp298to312>
- **Contact Information**

Brad Updegrave, PE
Engineering Project Manager
Pennsylvania Turnpike Commission
(717) 831-7365
bupdegra@paturnpike.com



Open Discussion

MP 302-308