

# PHOTO IMAGERY

MILEPOST 147.70 TO MILEPOST 148.43



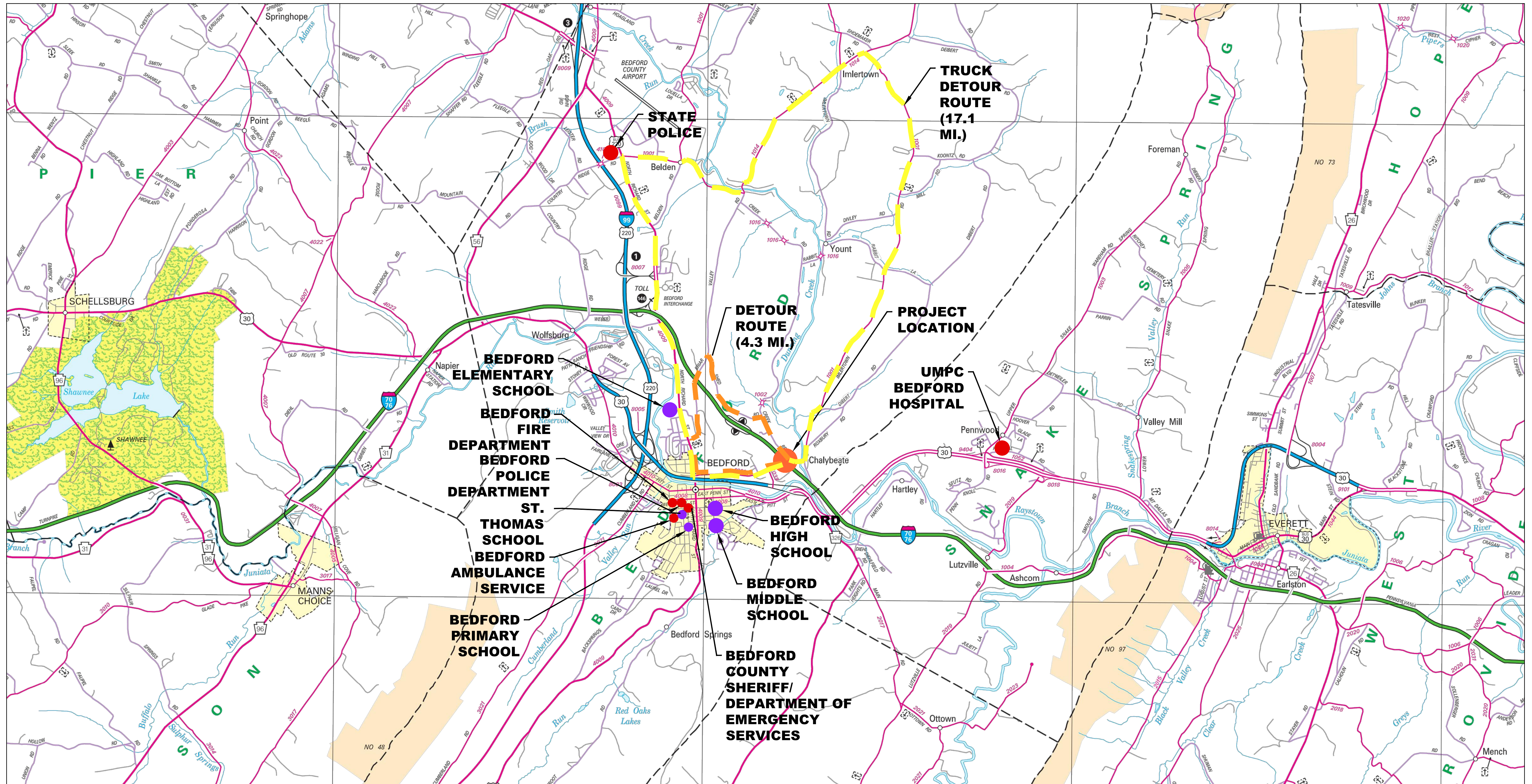
S.R. 1001 (SUNNYSIDE ROAD)  
LOOKING NORTHEAST AT B-140



S.R. 1001 (SUNNYSIDE ROAD)  
LOOKING SOUTHWEST AT B-140



# SCHOOL AND EMERGENCY SERVICE MAP

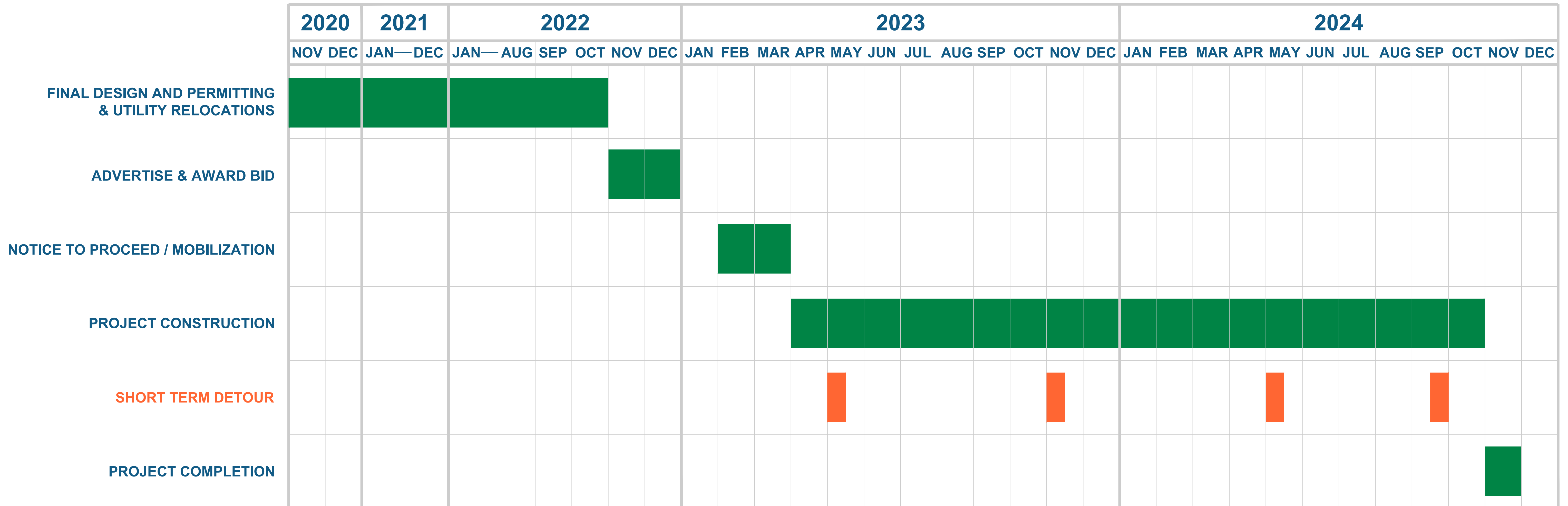




# ANTICIPATED CONSTRUCTION SCHEDULE

B-140 (MP 148.06) BRIDGE REPLACEMENT PROJECT

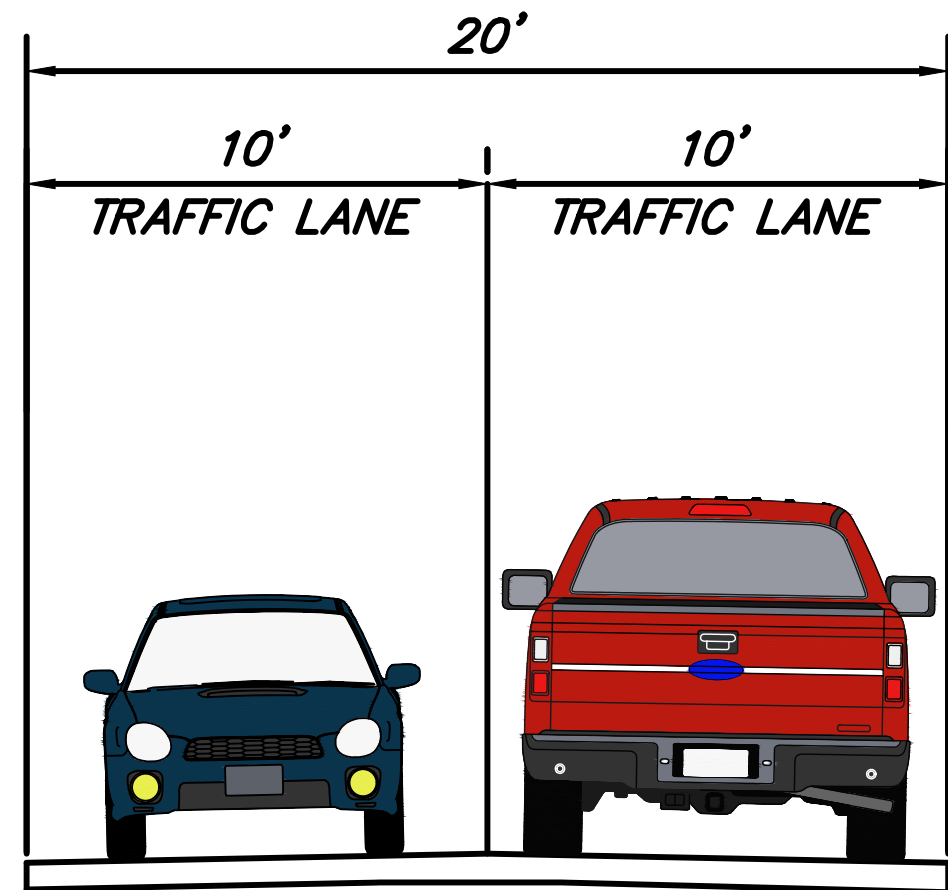
MILEPOST 147.70 TO MILEPOST 148.43



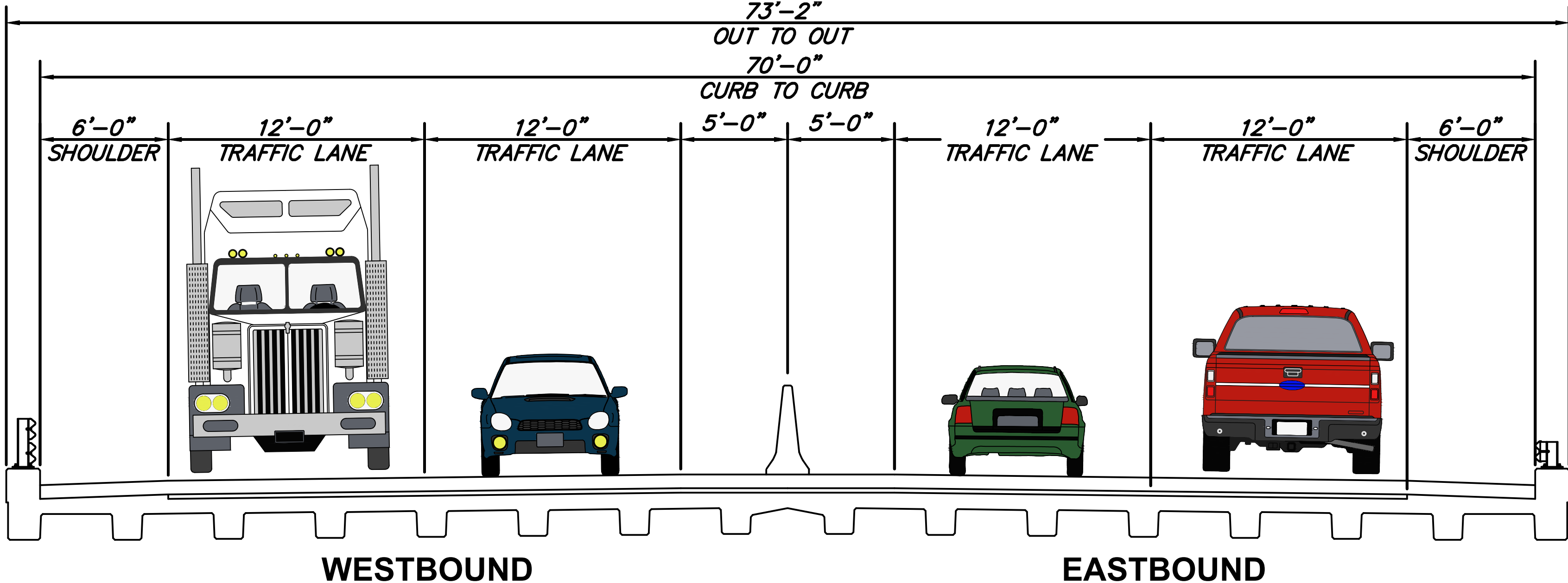
# TYPICAL SECTIONS

MILEPOST 147.70 TO MILEPOST 148.43

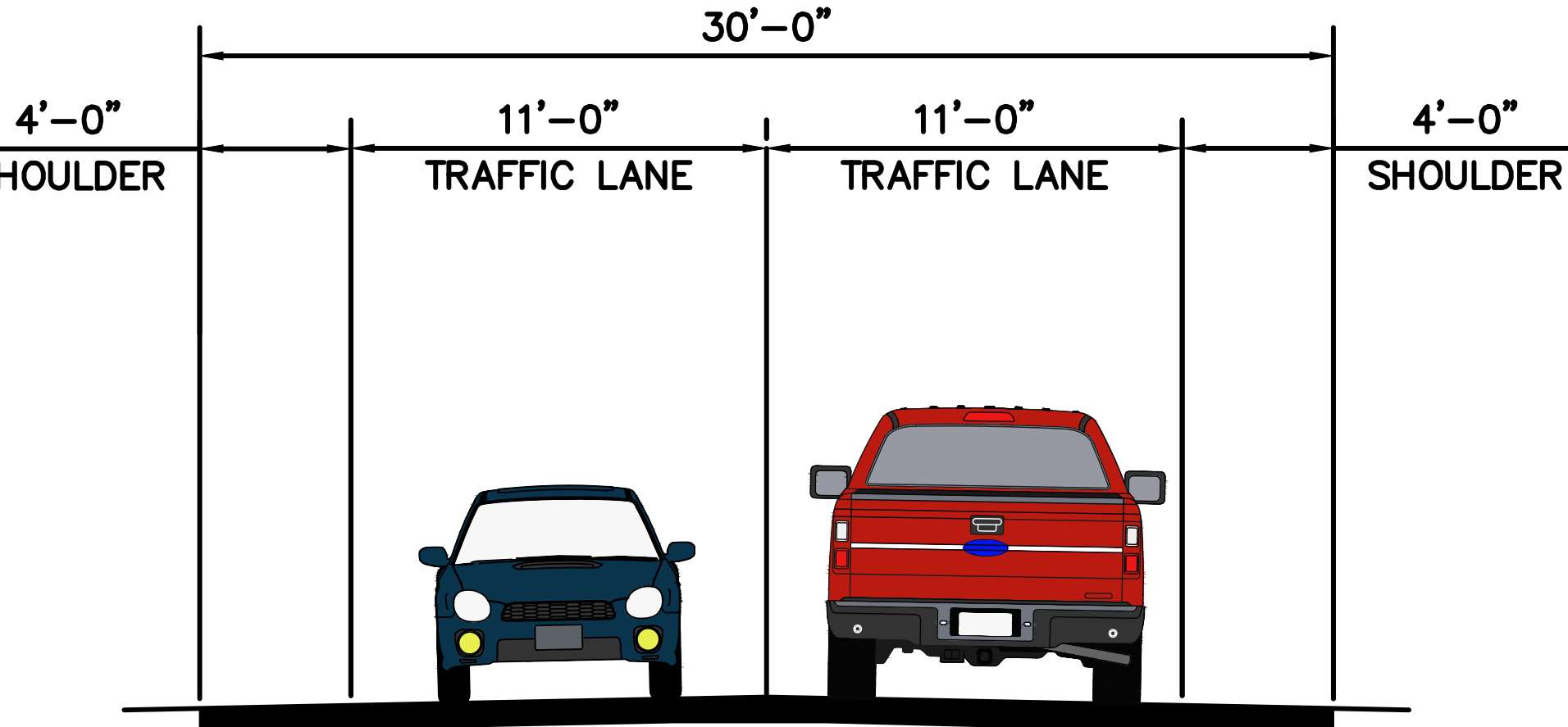
**EXISTING SUNNYSIDE ROAD (S.R. 1001)**



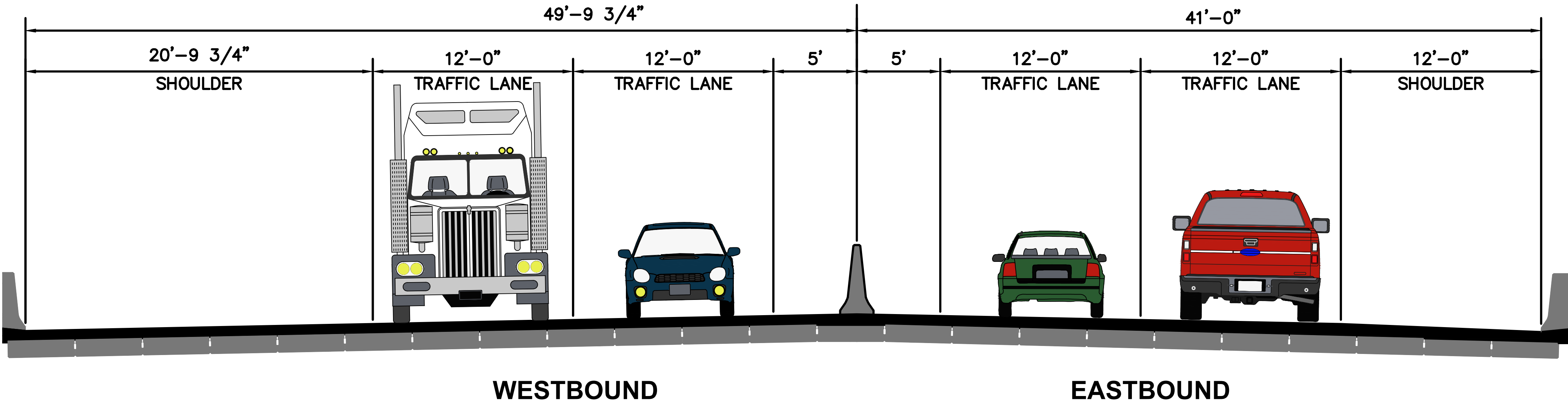
**EXISTING PA TURNPIKE**



**PROPOSED SUNNYSIDE ROAD (S.R. 1001)**



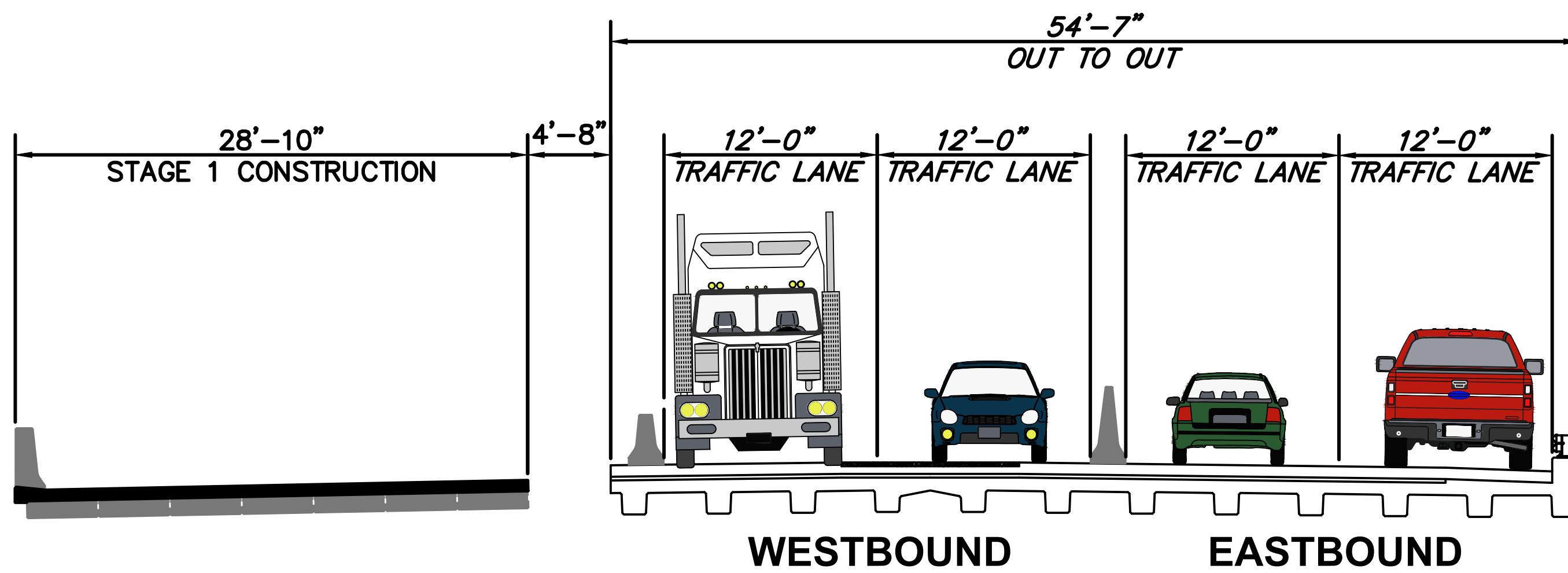
**PROPOSED PA TURNPIKE**



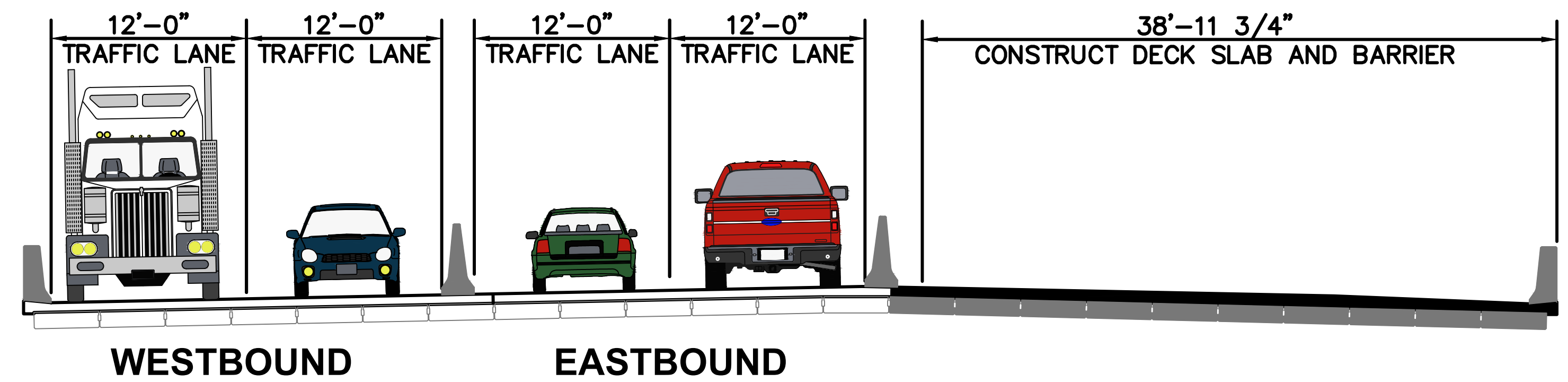
# STAGING TYPICAL SECTIONS

MILEPOST 147.70 TO MILEPOST 148.43

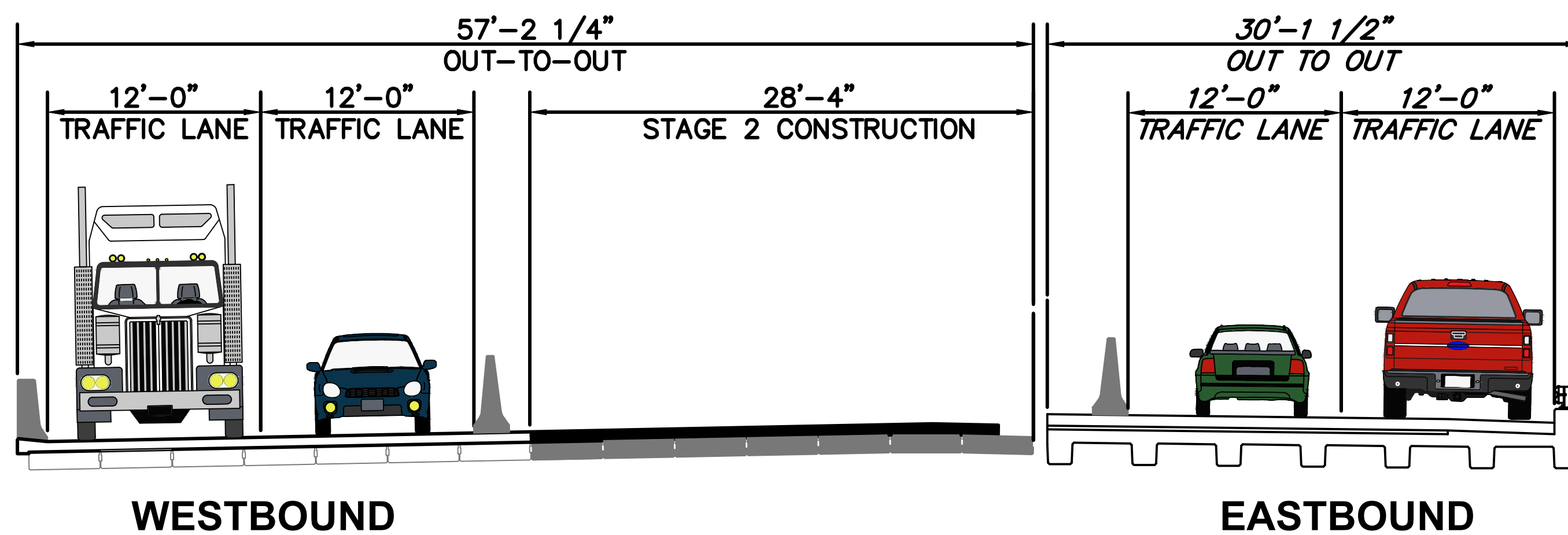
**STAGE 1**



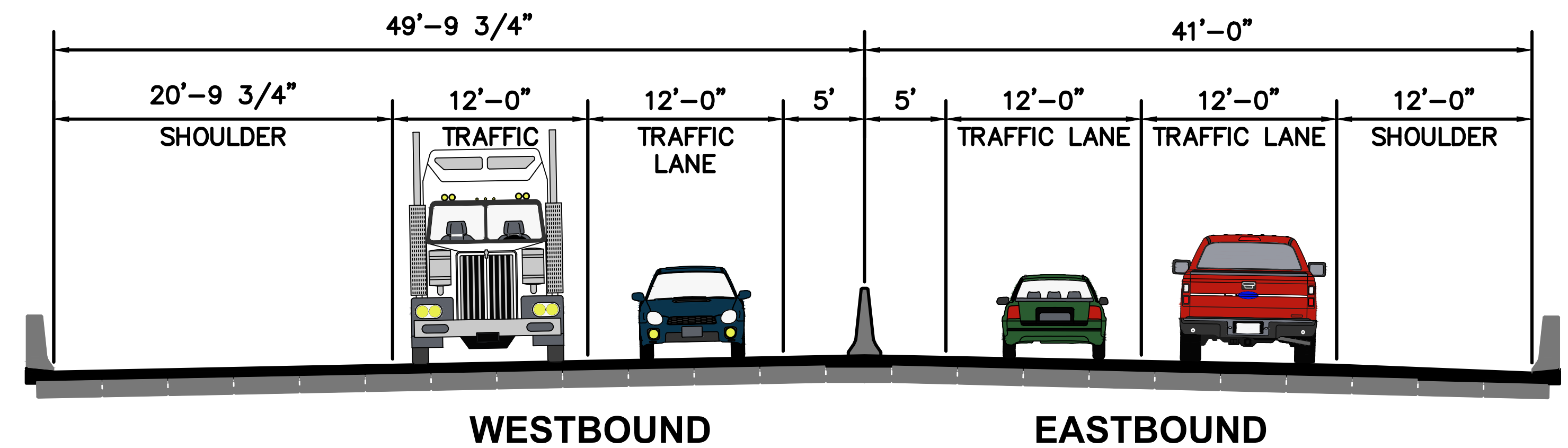
**STAGE 3**



**STAGE 2**



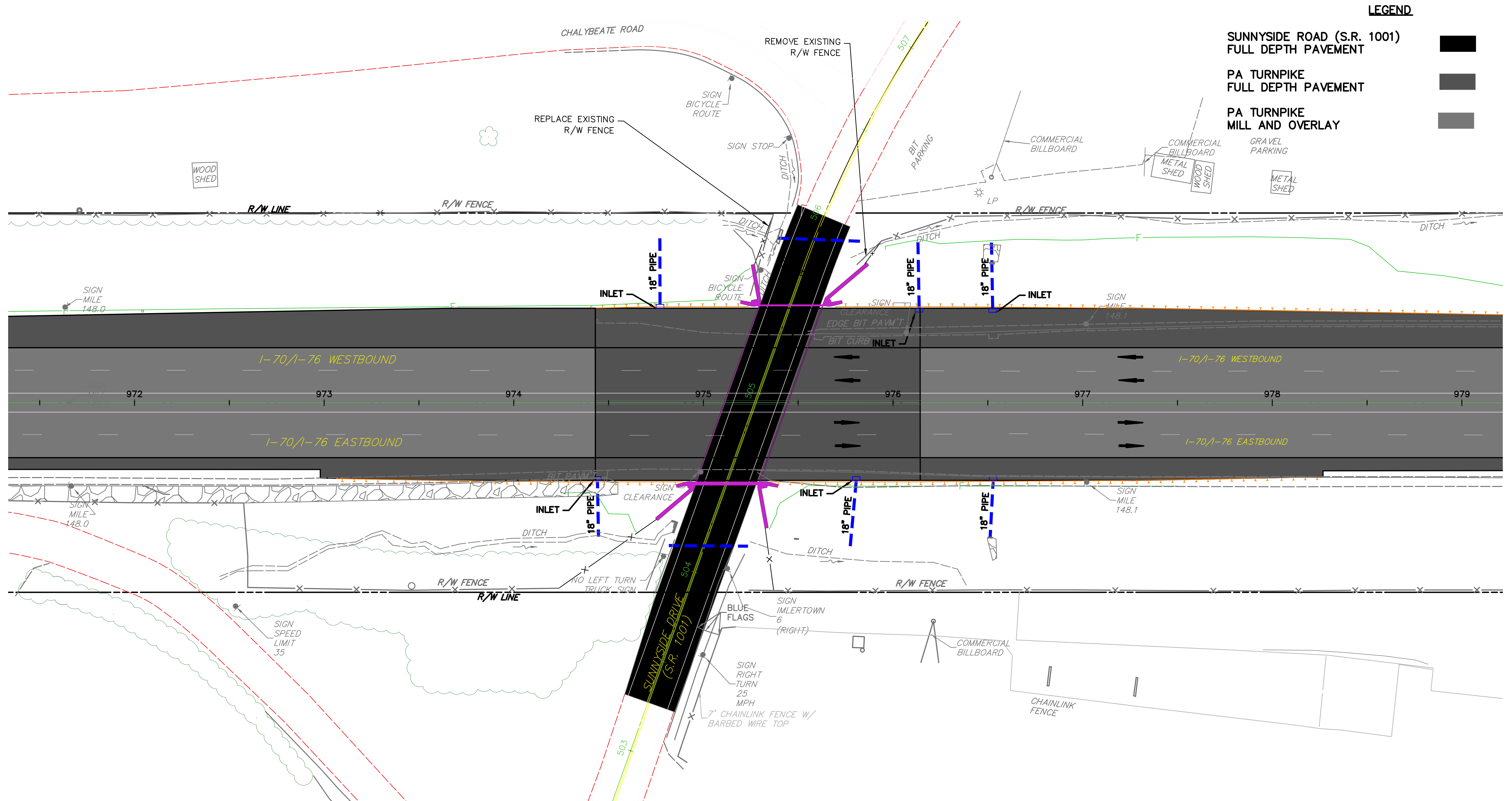
**FINAL CONDITION**





# ROADWAY PLAN

MILEPOST 147.70 TO MILEPOST 148.43



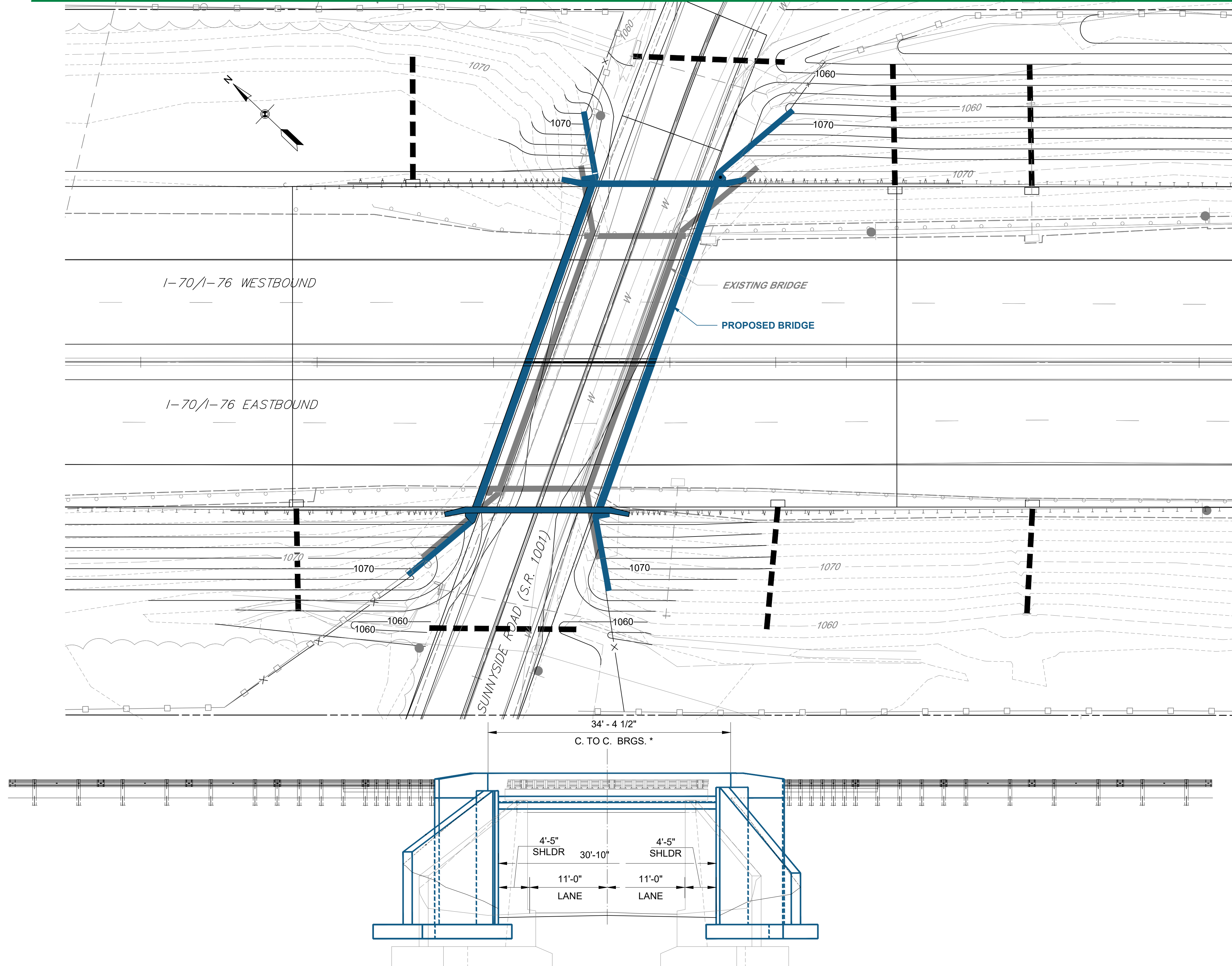
### LEGEND

- SUNNYSIDE ROAD (S.R. 1001)  
FULL DEPTH PAVEMENT
- PA TURNPIKE  
FULL DEPTH PAVEMENT
- PA TURNPIKE  
MILL AND OVERLAY
- GRAVEL PARKING



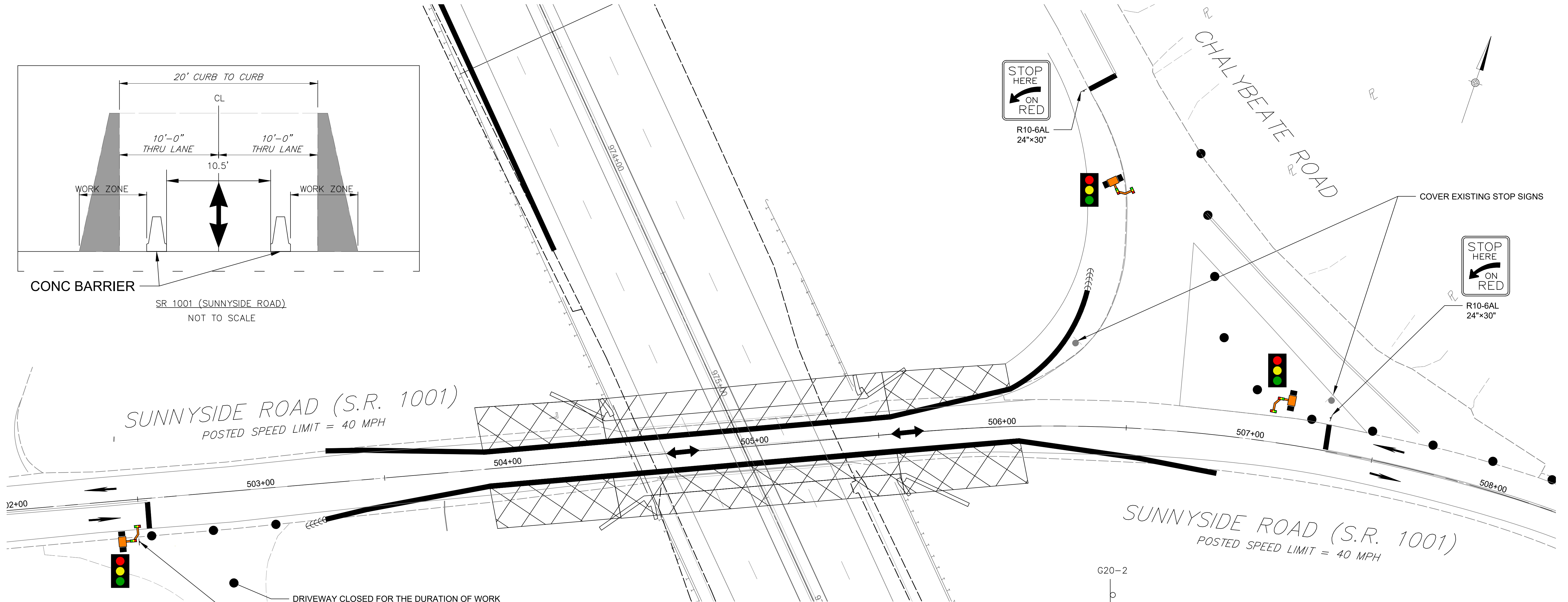
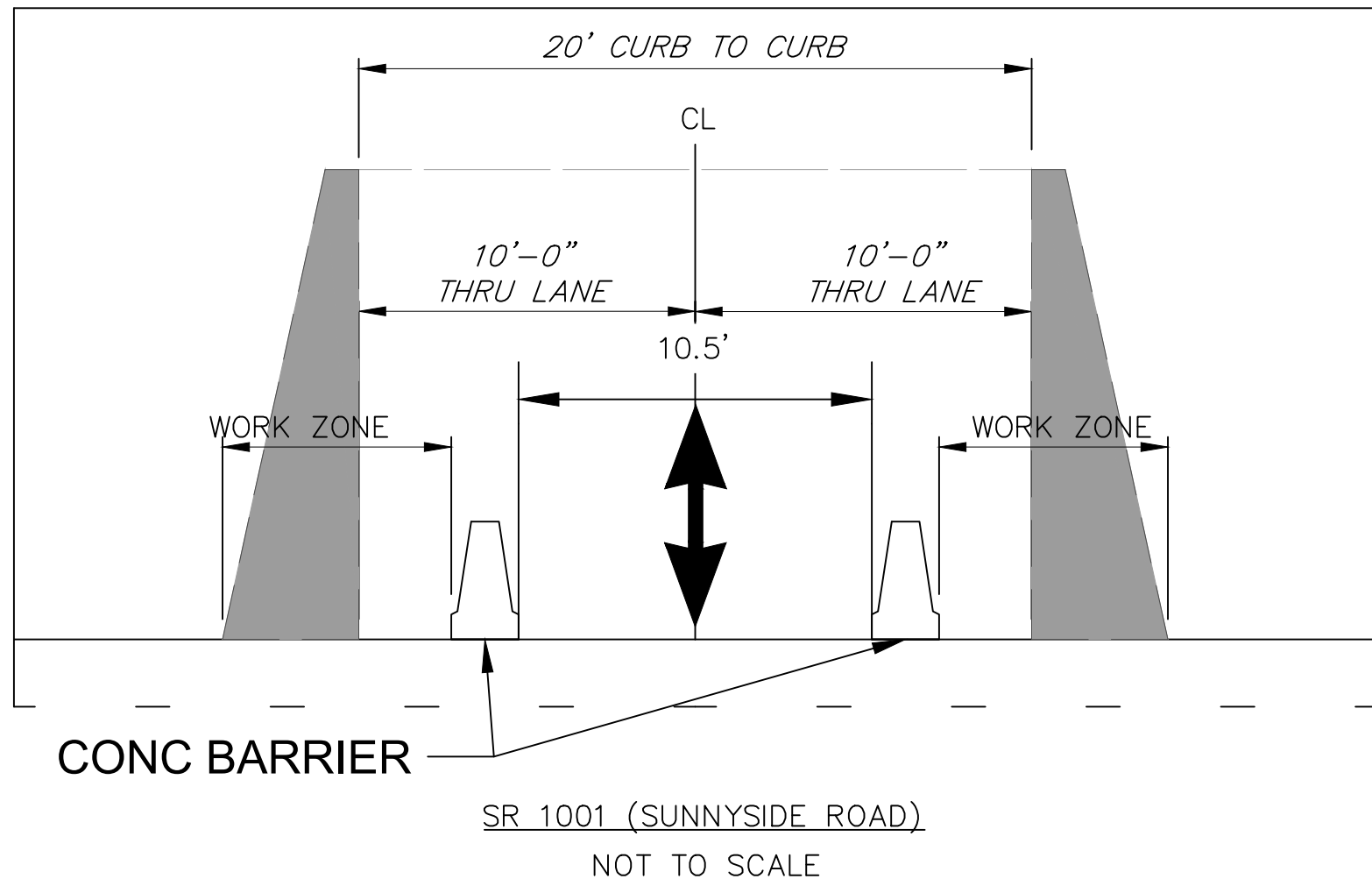
# BRIDGE TYPE, SIZE & LOCATION

MILEPOST 147.70 TO MILEPOST 148.43



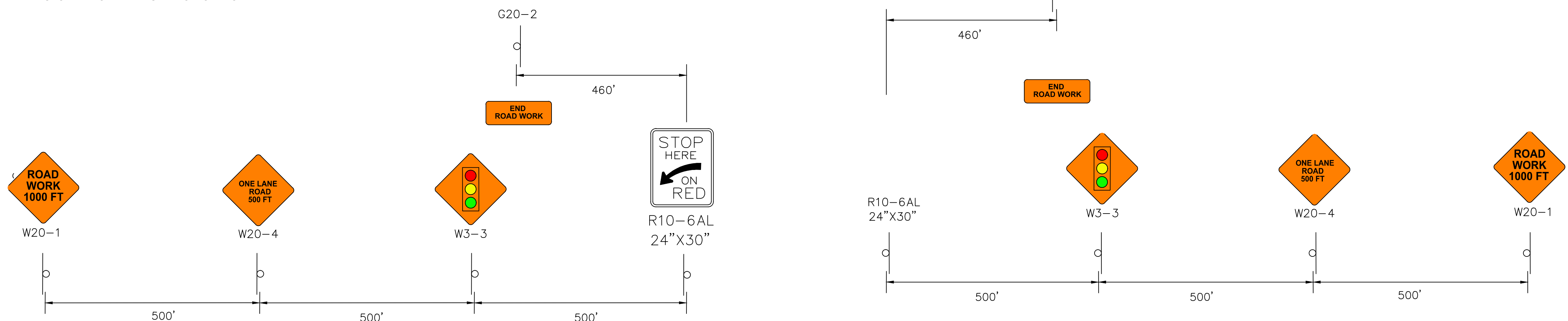
# TEMPORARY SIGNAL

MILEPOST 147.70 TO MILEPOST 148.43



**LEGEND**

- WORK ZONE
- DIRECTION OF TRAVEL
- PROPOSED TRAFFIC CONTROL SIGN
- TEMPORARY IMPACT ATTENUATING DEVICE
- TEMPORARY BARRIER
- CHANNELIZING DEVICE
- SOLID WHITE LINE/WIDTH
- SOLID YELLOW LINE/WIDTH
- DOUBLE YELLOW LINE/WIDTH
- TRAILER MOUNTED PORTABLE TRAFFIC SIGNAL







## CONTACT INFORMATION

MILEPOST 147.70 TO MILEPOST 148.43

### Project Contact:

**Walter (Wally) W. Wimer, PE**  
Sr. Engineer Project Manager

**Pennsylvania Turnpike Commission**  
700 S. Eisenhower Blvd. Middletown, PA 17057

Phone: 717.468.7151

Email: [wwimer@paturndpike.com](mailto:wwimer@paturndpike.com)

### Project Information Website:

<https://www.patpconstruction.com/mp148/>