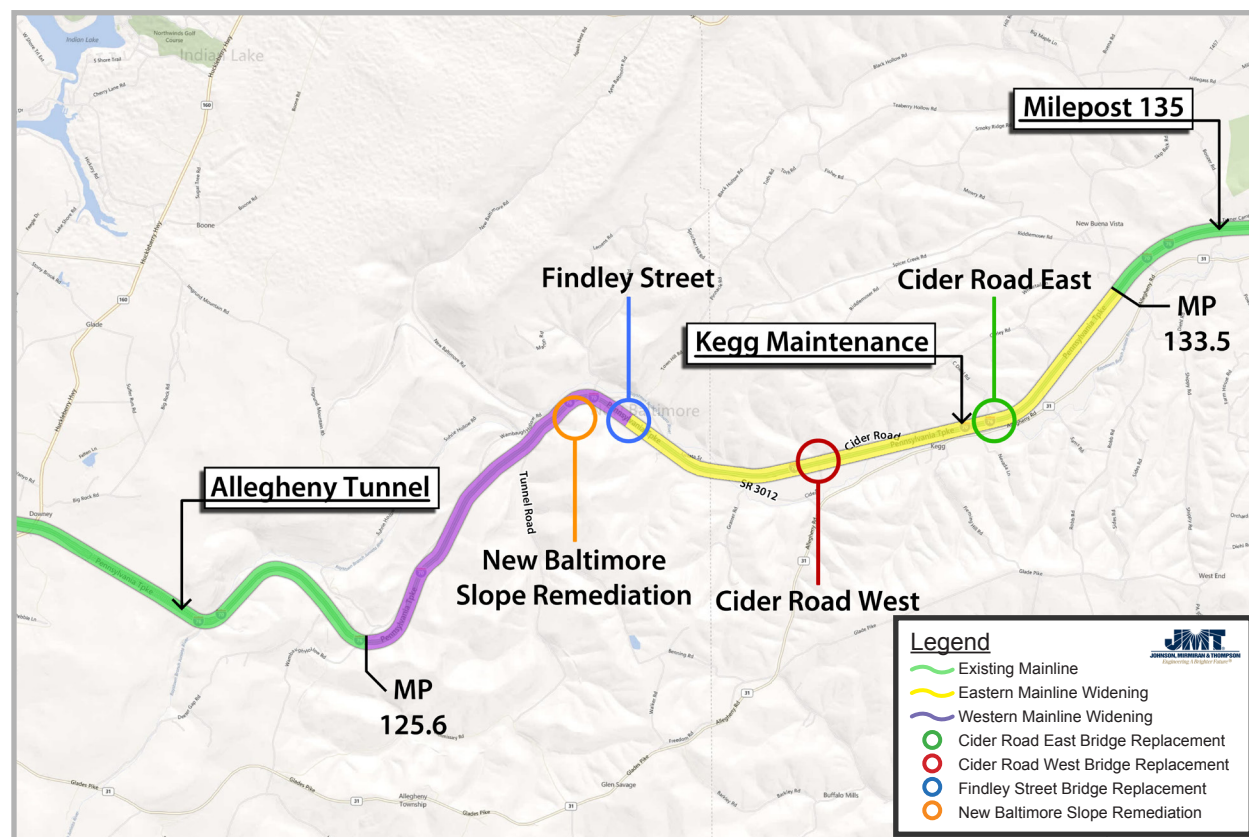
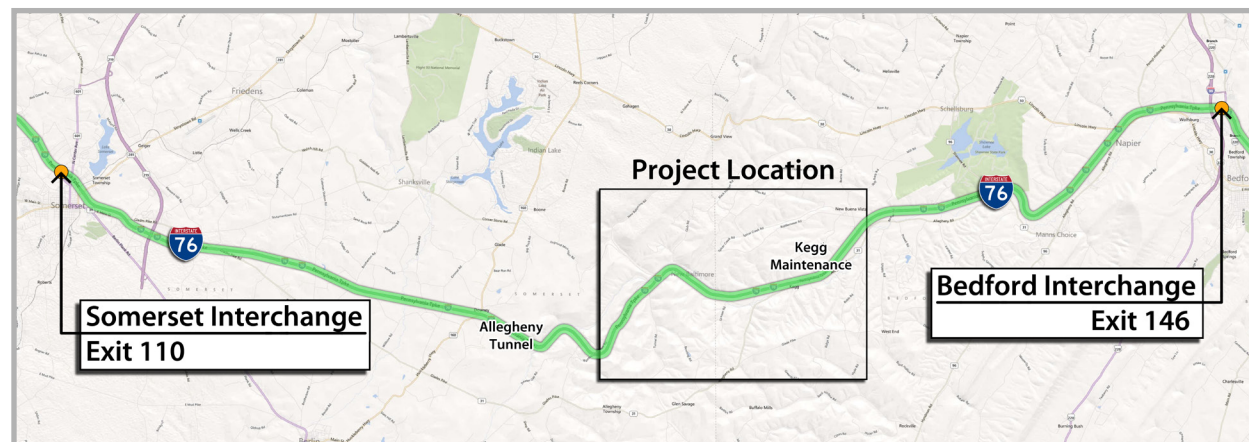


Project Area Map



Welcome to Tonight's Meeting

October 25, 2012

The Pennsylvania Turnpike Commission (PTC) and its design/environmental consultants welcome you to tonight's Open House Plans Display for the Reconstruction and Widening Project - Milepost 125.6 (2.2 miles East of the Allegheny Tunnel) to Milepost 133.5 (1.1 miles East of Keggs Maintenance Facility).

The purpose of tonight's meeting is to present the plans for the project, illustrate the bridges to be replaced, discuss detours, identify environmental and property impacts and provide an anticipated construction schedule. Project team members will be available throughout the meeting to discuss the project details as well as the right-of-way acquisitions process.

Project to Improve Safety and Congestion

The PTC has plans to invest \$180 million to provide the total roadway reconstruction and widening of eight miles of the PA Turnpike and replace three bridges crossing over the Turnpike. More than 45,000 cars and trucks travel this stretch per day. Upon completion of the Western Mainline construction the existing five-lane facility, with 10-foot outside shoulders and a 10-foot median, will be widened to a five-lane facility with an 18-foot median and 12-foot outside shoulders. Upon completion of the Eastern Mainline construction the existing four-lane facility with 10-foot outside shoulders and a 10-foot median will be upgraded to a six-lane facility (three 12-foot travel lanes eastbound and three westbound) with a 26-foot median and 12-foot shoulders. The new 26-foot median will consist of 12-foot inside shoulders and a two-foot wide concrete barrier. These Roadway upgrades will result in substantial improvements to safety and congestion in addition to completely replacing aging pavement built in the 1940's.

Project Area

The project area begins at Milepost 125.6 (2.2 miles East of the Allegheny Tunnel) and continues to Milepost 133.5 (1.1 miles East of the Keggs Maintenance Facility). The project involves the total reconstruction and widening of eight miles of the Turnpike's east-west mainline (Interstate 76). The project area involves Allegheny Township and New Baltimore Borough in Somerset County and Juniata Township in Bedford County.



Looking West towards Findley Street Bridge



Looking East from Findley Street Bridge



Information on Display

The meeting is being conducted as an open house with stations displaying various components of the project. Engineering plans developed to date and other supplemental data will be available for your review. At each of these stations, project team representatives will be present to answer your questions.

Station 1: WELCOME AND REGISTRATION

Please be sure to sign our attendance roster upon entering and pick up a comment form to complete and deposit at Station 7 before leaving. Additional meeting handouts are also available here.

Station 2: CONSTRUCTION SCHEDULE & TYPICAL SECTIONS

Construction began Spring of 2012 and includes several construction contracts. Visit this station to learn about the construction schedule planned for the early action bridge replacements, including detours and the roadway sections.

Station 3: MAINLINE ROADWAY PLANS

Plans for the entire project area will be available at this station. Maps will include the design, bridge replacements, property lines, required right-of-way, environmental features and labeled landmarks.

Station 4: OVERHEAD BRIDGE REPLACEMENTS - BRIDGES CROSSING OVER THE TURNPIKE

As a part of this project, the following overhead bridges will be replaced:

- Cider Road West Bridge Replacement (Juniata Township), Milepost 130.9
- Findley Street Bridge Replacement (New Baltimore Borough), Milepost 129.0

Plans of each of the bridge replacements, detours associated with these bridges and their typical sections will be available for review.

Station 5: NOISE ANALYSIS

This station provides aerial views of the project area showing noise monitoring locations and the proposed noise barrier location. The noise study was conducted in compliance with Federal Highway Administration regulations and the Pennsylvania Department of Transportation criteria.

Station 6: RIGHT-OF-WAY

If your property is expected to be impacted by the project, visit this station to have questions answered about the right-of-way acquisition process.

Station 7: COMMENT AND SUGGESTION AREA

We want to hear from you. Please complete a comment form this evening before you leave and drop it in the comment box. If you still have questions, project team members will be available to answer them.

Anticipated Construction Schedule

