

Spring 2026 Update: Beaver River Bridge Replacement Project

The Beaver River Bridge project is currently in stage four of construction. The mainline Pennsylvania Turnpike lanes have been shifted south to allow for earthwork, grading and asphalt paving to realign the roadway with the new river crossing structures. All four piers and pier tables for the westbound Beaver River Bridge crossing have been completed. Fifteen-foot segmental concrete placements have been completed from westbound piers 1 and 4 headings. Form travelers have been moved to westbound piers 2 and 3 for segmental construction at those headings, which is in progress. Segmental construction at these headings will continue into fall 2026, when closure segments will be built. Construction of abutment end segments is underway and will be completed in summer 2026.



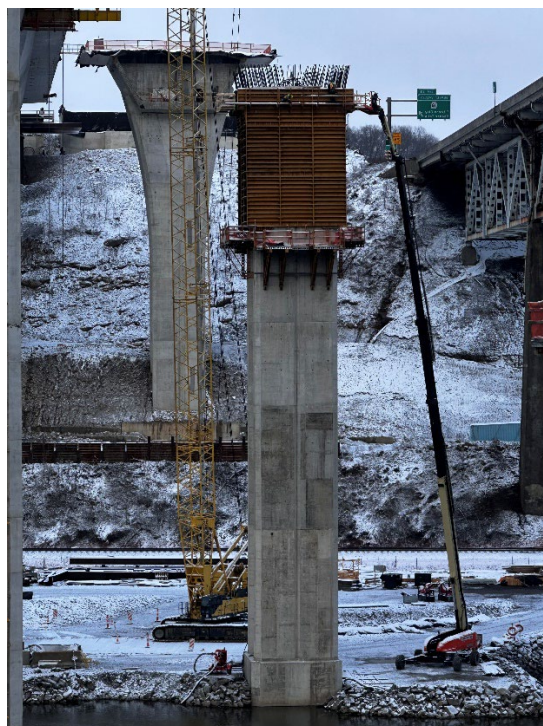
For the eastbound Beaver River Bridge crossing, piers 1 and 4 have been completed, and pier table construction at these locations is finished. Pier construction at piers 2 and 3 is in progress, with completion scheduled for spring 2026.

Most excavation for the new roadway alignment has been completed. Limited excavation remains for the new configuration of the Beaver Valley Interchange, which will continue into 2026.



Bridge deck construction for WB-209 (Interstate 76 over State Route 18) has been completed. Mainline roadway paving and interchange storm drainage work will continue through spring and summer, along with erosion and sedimentation control.

Reconstruction of Big Beaver Boulevard (State Route 18) continues with traffic shifted to the newly reconstructed lanes. Reconstruction of the median and shoulders will begin in spring 2026 and continue through the summer. A new sanitary sewer line and upgraded storm drainage have been completed.



Traffic entering and exiting I-76 eastbound and westbound is in temporary ramp configurations. Please use caution and follow posted signage when entering and exiting the Turnpike. Be alert for intermittent flagging operations and construction vehicles entering and exiting work areas in the construction zone.

Traffic on River Road (State Route 1001) will have intermittent stoppages due to flagging for work zone access.

Thompson Run Road was closed to traffic on July 23, 2023, for regrading and realignment and will reopen when construction activities allow.