

# Environmental Considerations



In accordance with National Environmental Policy Act requirements, the Supplemental EIS will evaluate and identify potential new impacts on environmental features resulting from changes to the original Final Environmental Impact Statement (FEIS) Selected Alternative. Methodologies have been developed to study the following key resources:

## Residents and Business Owners

Noise and Vibration      Property Impacts

Groundwater      Future Development

Delaware River      Air Quality      Archaeology

Wetlands and Streams      Floodplains

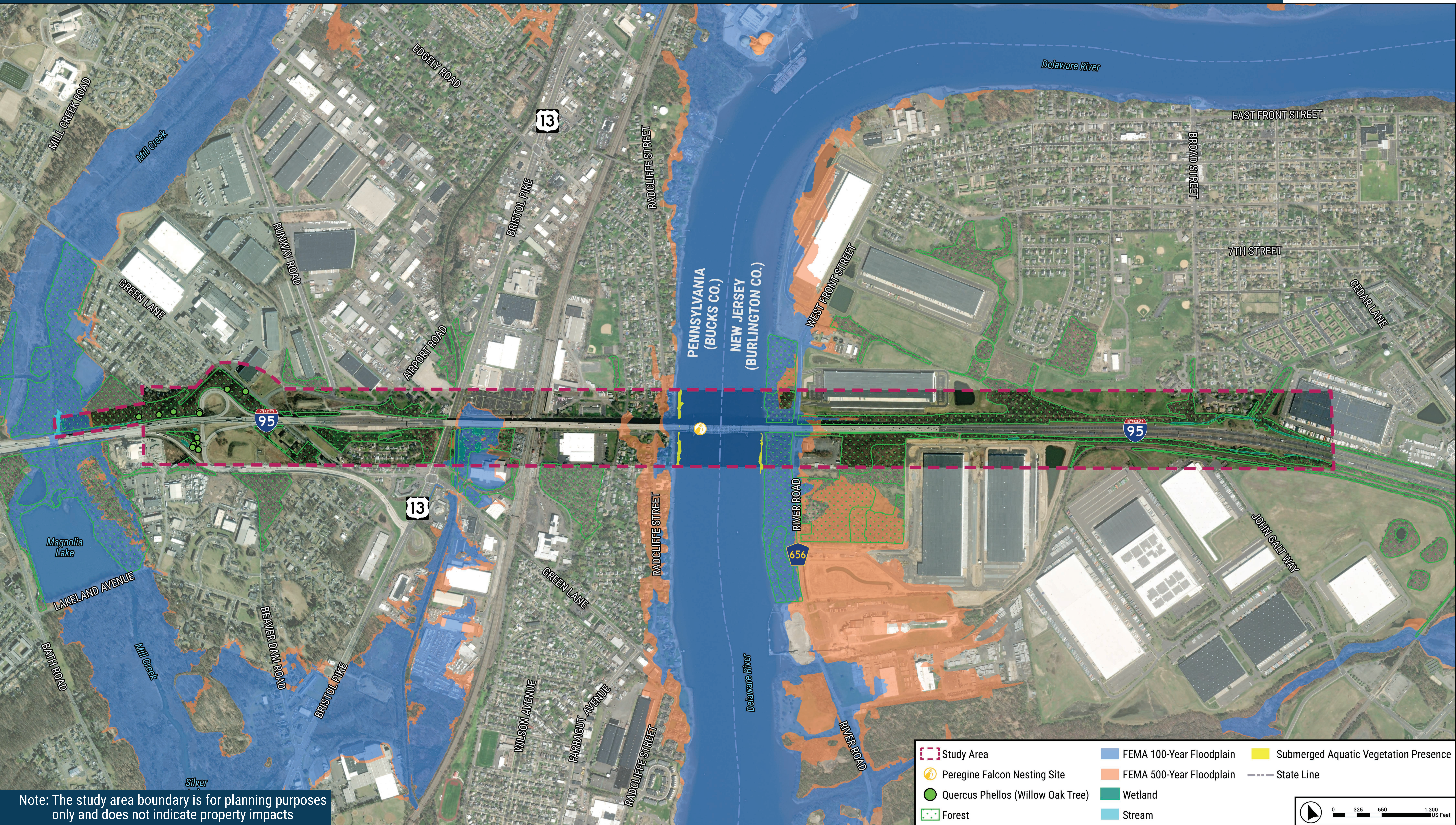
Historic Resources      Trails      Community

Parkland      Canal      Hazardous Waste

Threatened and Endangered Species

Note: These displays are intended for the March 2025 Public Meeting Open House Series and are subject to change as the project progresses.

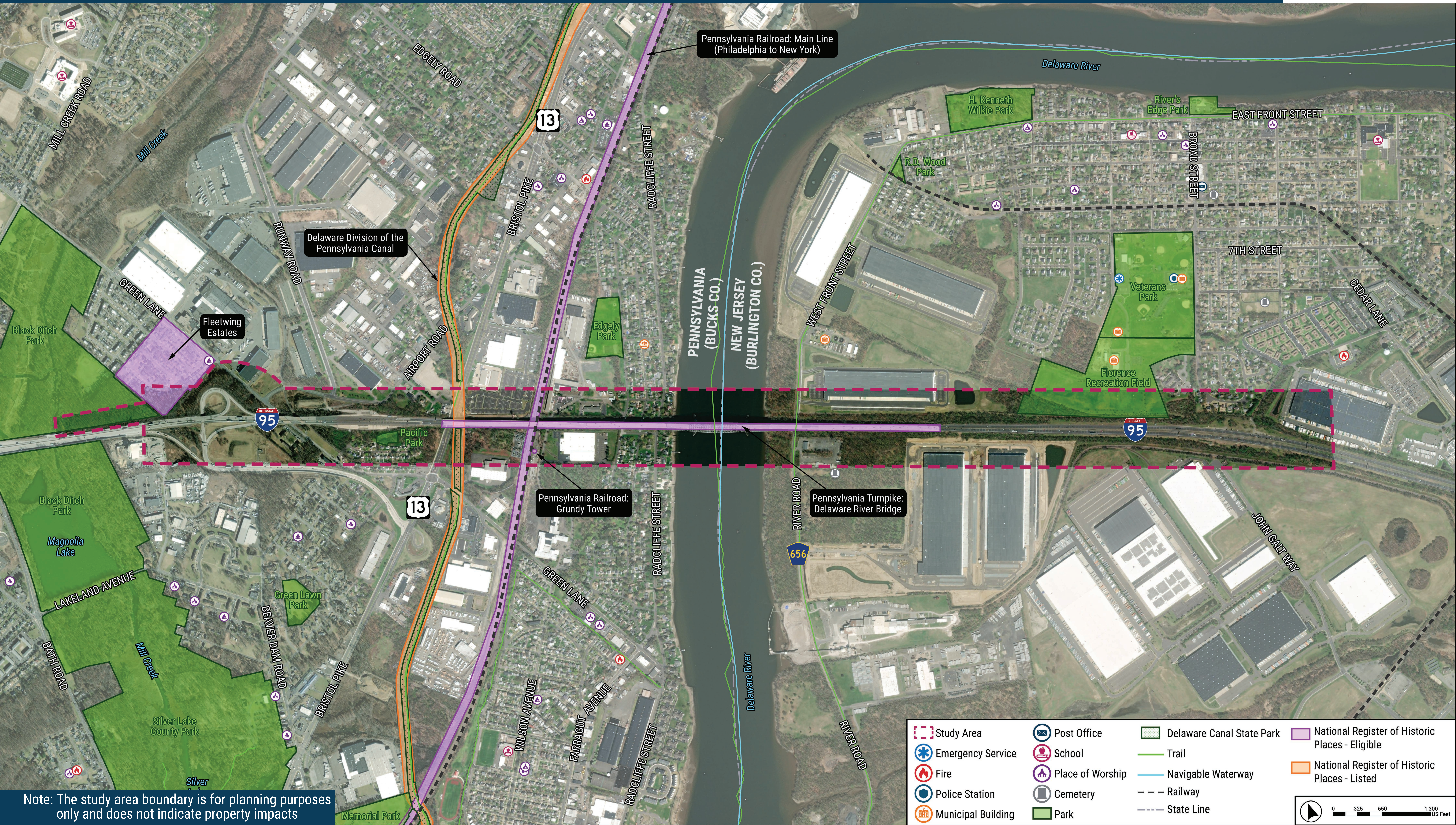
# Natural Resources



Note: The study area boundary is for planning purposes only and does not indicate property impacts

Note: These displays are intended for the March 2025 Public Meeting Open House Series and are subject to change as the project progresses.

# Socioeconomic and Historic Resources



# Historic Preservation: Section 106 Process



## How to get involved in the Section 106 Process

Section 106 of the National Historic Preservation Act requires federal agencies to consider the effects of their projects on historic properties.

Individuals or organizations with a demonstrated interest in the project, including a legal or economic interest, or who are concerned with the effects of the project on historic properties, may request to be consulting parties.

Consulting party status entitles the participant to share their views, receive and review pertinent information, offer ideas, and consider possible solutions together with FHWA and other consulting parties.

**Please Contact:**

**Monica Harrower**  
**Cultural Resource Professional**

PennDOT District 6-0  
7000 Geerdes Boulevard  
King of Prussia, PA 19406  
[mharrower@pa.gov](mailto:mharrower@pa.gov)


Note: These displays are intended for the March 2025 Public Meeting Open House Series and are subject to change as the project progresses.

# Environmental Clearance Process



## Supplemental Environmental Impact Statement

### Why is it Required?

 The time elapsed since the 2003 Record of Decision (ROD)

 The Delaware River Bridge eligibility for the National Register of Historic Places

 Updated regulations

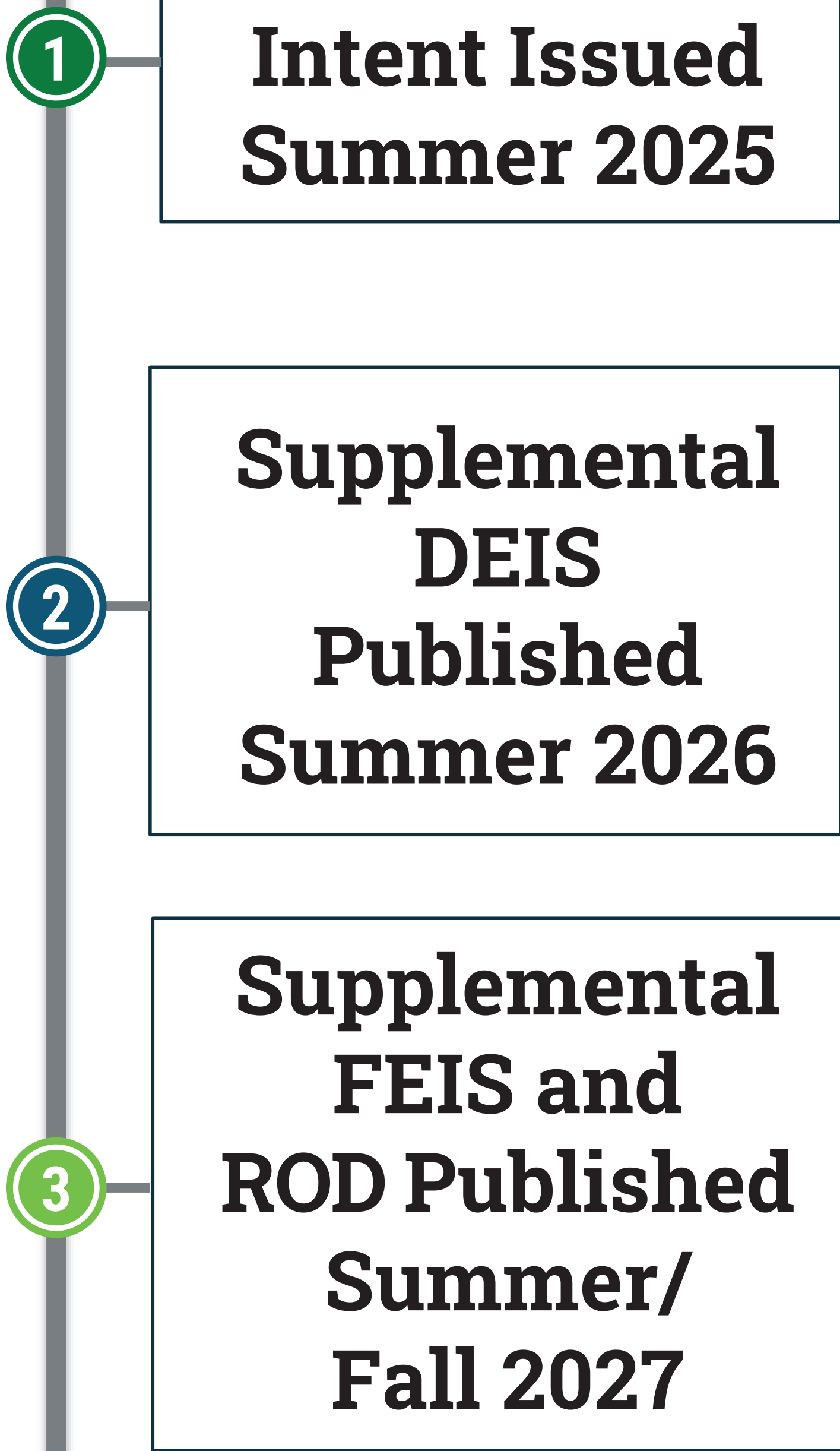
 Potential new design changes

 Potential new or changed impacts

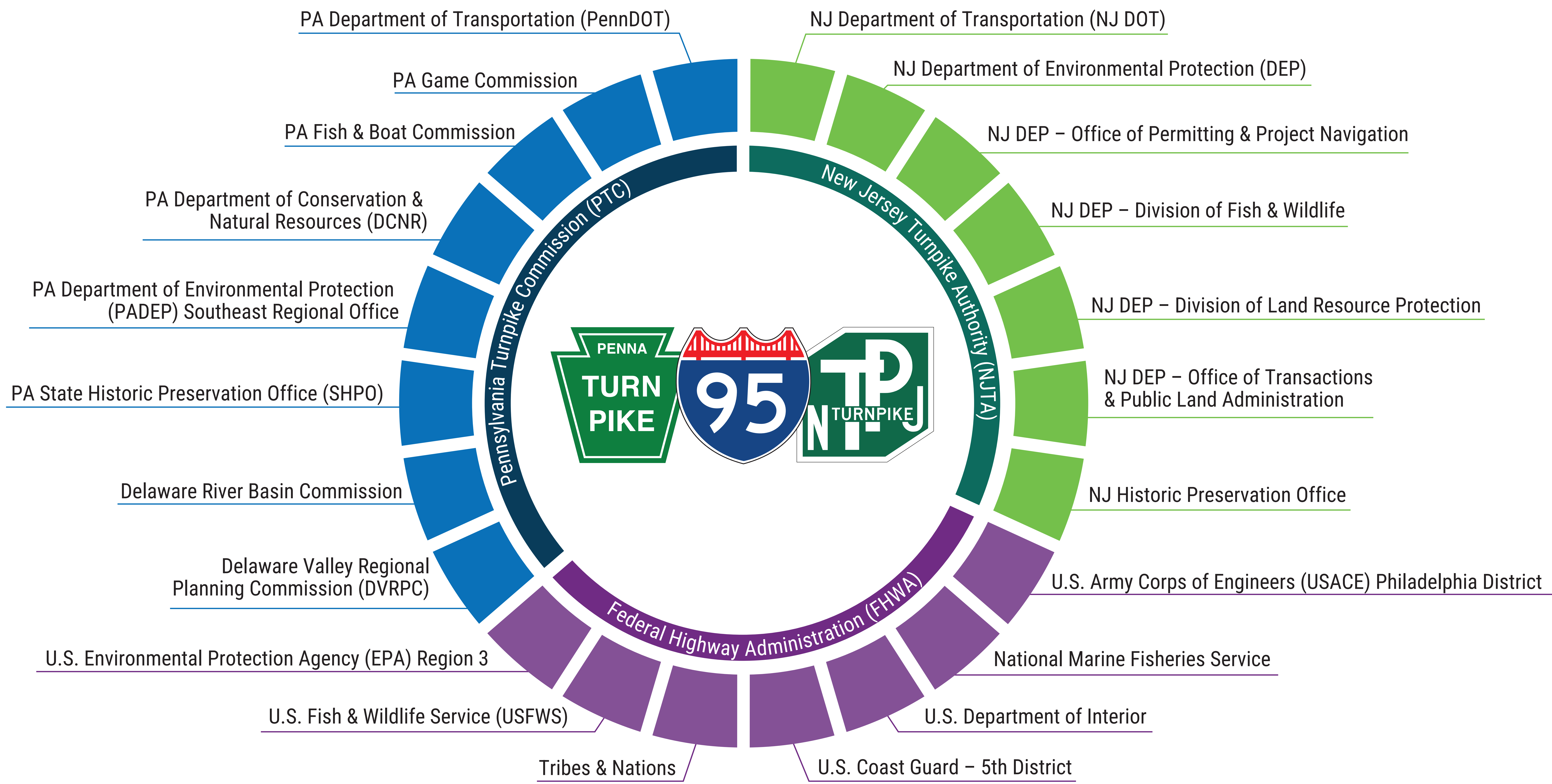
Note: These displays are intended for the March 2025 Public Meeting Open House Series and are subject to change as the project progresses.

### What is the Process?

- Notice of Intent (NOI)
  - Published in the Federal Register
  - Announces the project and how to participate
  - Presents the issues and alternatives to be analyzed
- Supplemental Draft EIS (DEIS)
  - Published for public review and comment
  - Identifies and evaluates all reasonable alternatives
  - Identifies recommended preferred alternative
  - Includes public hearing (Pennsylvania and New Jersey)
- Supplemental FEIS and Record of Decision (ROD)
  - Comments will be responded to and addressed
  - Identifies a selected alternative, mitigation, and rationale for the decision



# Interagency Coordination Underway



Note: These displays are intended for the March 2025 Public Meeting Open House Series and are subject to change as the project progresses.