

Autodesk's Civil 3D

Implementation Instructions:

Prior to installation of the Pennsylvania Turnpike's Civil 3D Standard content, ensure that Autodesk's Civil 3D 2025 has already been installed on the pc of interest and that it has been installed to the "default" installation location on the "C:\\" drive of that computer. If the software has been installed to a different drive letter, the installation will have to be modified manually to the new location. The PTC Civil 3D Standards deployment will look for and write to the system folders located on the C:\ drive.

*****If you have a previous version of the PTC Civil 3D Workspace installed on your computer, archive or delete from the installation location. Do NOT install on top the previous installation.**

Once the software has been installed to the correct location, The PTC CIVIL3D 2025 Standards Setup v3.1.zip file is provided on the *Downloads* page on the Digital Delivery web site.

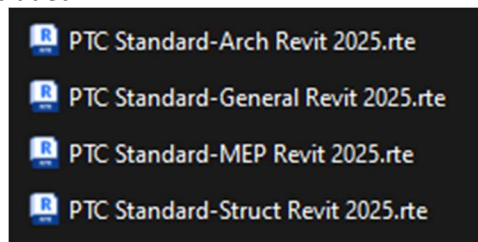
1. Download the "PTC CIVIL3D Standards Setup v3.1.zip" and store it in an accessible location.
2. Extract all files from the .zip and store them in an accessible location.
3. Ensure that proper software installation rights have been granted on the machine.
4. Disable the machine's antivirus software.
5. Disable the machine's Firewall.
6. Launch the installation by double-clicking on the PTC_CIVIL3D_2025_Standards_Setup_v3.1.exe.
7. Select any options you choose and navigate through the installation wizard.
8. Once completed, re-enable the antivirus software and firewall.
9. Go to the system's Desktop and look for the new application icon entitled PTC Civil 3D 2025 and double-click on it to launch the software.
10. After the software is up and running, all new and default drawing files created by launching from this icon will then be built off of the PTC Standard Drawing Template. (Always launch the software by double-clicking on this icon for PTC projects, DO NOT launch the software from the default Autodesk icon or by double-clicking on a drawing file).

Autodesk's Revit

Implementation Instructions:

The PTC Revit2025 3.0.zip file is provided on the *Downloads* page on the Digital Delivery web site.

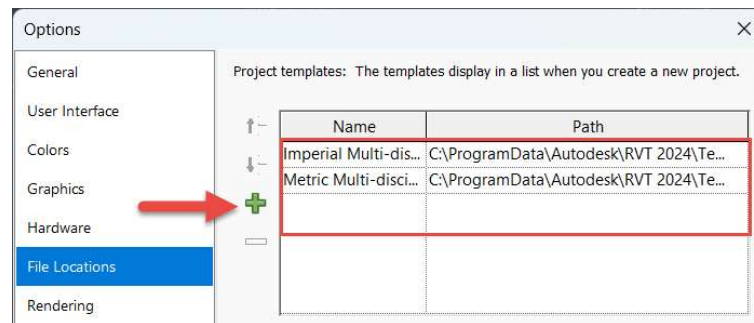
1. Ensure that Revit 2025 has been installed on the machine of interest.
2. Download the "PTC Revit2025 3.0.zip" and store it in a secure location.
3. Once the zip has been downloaded, double-click on the zip and extract contents. There should be 4 Revit templates included.



4. Move or copy the Templates to your preferred location. (If you don't have a preferred location, the default location for Autodesk Templates is "C:\Program

Data\Autodesk\RVT 2025\Templates”. Also note that the ProgramData folder is a system folder that is hidden by default. You may have to go into your systems Options to enable the display of this folder.)

5. If you chose to store the Templates in a custom location, you will need to include this location in your Revit Settings. To do this,
 - a. Launch Revit and from the “File” menu, select “Options”.
 - b. When the Options dialog box opens, navigate to the “File Locations” tab and look for the section entitled "Project Templates:"
 - c. Select the (+) to add a new path and browse to your custom location. You may also use the up and down arrows on the left to adjust the priorities of the templates if you choose to do so.
 - d. Once completed, choose “OK” to dismiss the Options dialog box and you are now ready to react new files with the PTC Revit Templates.



Bentley's OpenRoads Designer

Implementation Instructions:

The PTC ORD Workspace 3.2.zip file is provided on the *Downloads* page on the Digital Delivery web site. This file should be downloaded and expanded on the user's computer.

*****If you have a previous version of the PTC ORD Workspace installed on your computer, archive or delete from the installation location. Do not archive into a sub-folder within the same folder structure. OpenRoads will scan these folders and find the old files during use.**

Moving files to correct location

The PTC CAD Standards zip file contains the following files. Organization-Civil folder and the Workspace folders.

The program's default location for the Organization-Civil configuration level files/folders is:

C:\ProgramData\Bentley\OpenRoads Designer 2023.00\Configuration\Organization-Civil

The program's default location for the WorkSpace configuration level files/folders is:

C:\ProgramData\Bentley\OpenRoads Designer 2023.00\Configuration\WorkSpaces

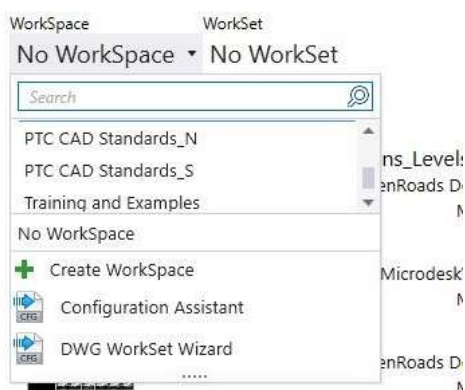
Also included is the PTC CAD STANDARDS Workspace configuration file and can be expanded in the program's workspace location.

If the user wants to store the different configuration levels at a different location, such as a network drive, the "C:\ProgramData\Bentley\OpenRoads Designer 2023.00\Configuration\PTC CAD Standards.cfg" file would need to be modified with a text editor to direct the program to the different location. Instructions are contained inside of the file concerning what to change.

Verify files are in correct location

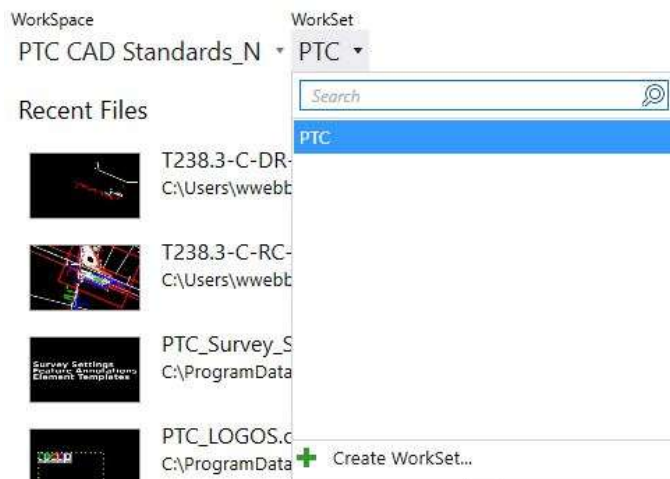
Once the files are copied into their respective folders and the WorkspaceSetup.cfg file is modified, if needed, open *OpenRoads Designer 2023.00*. With the program open, select the Workspace pull-down menu to verify the Workspace appears in the listing (see table below for current workspace name).

OpenRoads Designer 2023

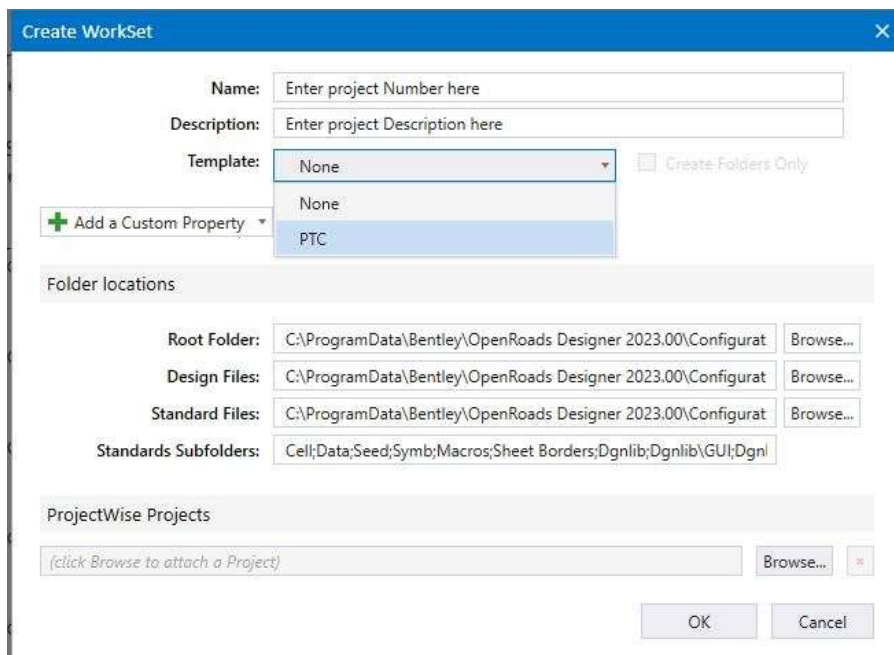


Creating a new WorkSet (not available with View)

1. In OpenRoads Designer CONNECT Edition (MicroStation Connect procedure is similar), select the Workspace, in the Workspace pull-down menu, that your project is located in.
2. Choose Create WorkSet... at the bottom of the WorkSet pull-down menu.



3. Enter the project number and project description in the appropriate fields.
4. Select *PTC* in the Template: field.



The image shows a 'Create WorkSet' dialog box with the following fields and options:

- Name:** Enter project Number here
- Description:** Enter project Description here
- Template:** A dropdown menu with 'None' selected. A list is open showing 'None' and 'PTC' (highlighted). To the right is a checkbox labeled 'Create Folders Only'.
- + Add a Custom Property** (with a dropdown arrow)
- Folder locations** section:
 - Root Folder:** C:\ProgramData\Bentley\OpenRoads Designer 2023.00\Configurat Browse...
 - Design Files:** C:\ProgramData\Bentley\OpenRoads Designer 2023.00\Configurat Browse...
 - Standard Files:** C:\ProgramData\Bentley\OpenRoads Designer 2023.00\Configurat Browse...
 - Standards Subfolders:** Cell;Data;Seed;Symb;Macros;Sheet Borders;Dgnlib;Dgnlib\GUI;Dgnl
- ProjectWise Projects** section:
 - (click Browse to attach a Project) Browse...
- Buttons:** OK, Cancel

5. Select OK and the WorkSet will be created.
- The WorkSet should now be ready for use.